

## CONFIRMATION OF ORDER

This Order was confirmed by Rother District Council without modification on the 29<sup>th</sup> day of June 2023

~~OR~~

~~This Order was confirmed by the Rother District Council, subject to the modifications indicated~~

~~by~~ on the  day of

~~.....~~  
Chief Executive, Rother District Council

~~.....~~  
Member of the Rother District Council

## DECISION NOT TO CONFIRM ORDER

A decision not to confirm this Order was taken by Rother District Council on the day of

.....  
Chief Director, Rother District Council

.....  
Member of the Rother District Council

## VARIATION OF ORDER

This Order was varied by the Rother District Council on the            day of  
by a variation order under reference number  
a copy of which is attached

.....  
Chief Director, Rother District Council

.....  
Member of the Rother District Council

## REVOCATION OF ORDER

This Order was revoked by the Rother District Council on the            day of

.....  
Chief Director, Rother District Council

.....  
Member of the Rother District Council

## **Town and Country Planning Act 1990**

### **The Rother District Council (Land at Normanhurst Estate, Catsfield – TPO439) Tree Preservation Order 2023**

The Rother District Council, in exercise of the powers conferred on them by section 198 of the Town and Country Planning Act 1990 make the following Order

#### **Citation**

1. This Order may be cited as the **Rother District Council (Land at Normanhurst Estate, Catsfield – TPO439) Tree Preservation Order 2023**.

#### **Interpretation**

2. (1) In this Order “the authority” means the Rother District Council.  
(2) In this Order any reference to a numbered section is a reference to the section so numbered in the Town and Country Planning Act 1990 and any reference to a numbered regulation is a reference to the regulation so numbered in the Town and Country Planning (Tree Preservation)(England) Regulations 2012.

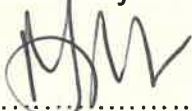
#### **Effect**

3. (1) Subject to article 4, this Order takes effect provisionally on the date on which it is made.  
(2) Without prejudice to subsection (7) of section 198 (power to make tree preservation orders) or subsection (1) of section 200 (tree preservation orders: Forestry Commissioners) and, subject to the exceptions in regulation 14, no person shall—  
(a) cut down, top, lop, uproot, wilfully damage, or wilfully destroy; or  
(b) cause or permit the cutting down, topping, lopping, wilful damage or wilful destruction of, any tree specified in the Schedule to this Order except with the written consent of the authority in accordance with regulations 16 and 17, or of the Secretary of State in accordance with regulation 23, and, where such consent is given subject to conditions, in accordance with those conditions.

#### **Application to trees to be planted pursuant to a condition**

4. In relation to any tree identified in the first column of the Schedule by the letter “C”, being a tree to be planted pursuant to a condition imposed under paragraph (a) of section 197 (planning permission to include appropriate provision for preservation and planting of trees), this Order takes effect as from the time when the tree is planted.

Dated this 9<sup>th</sup> day of January 2023

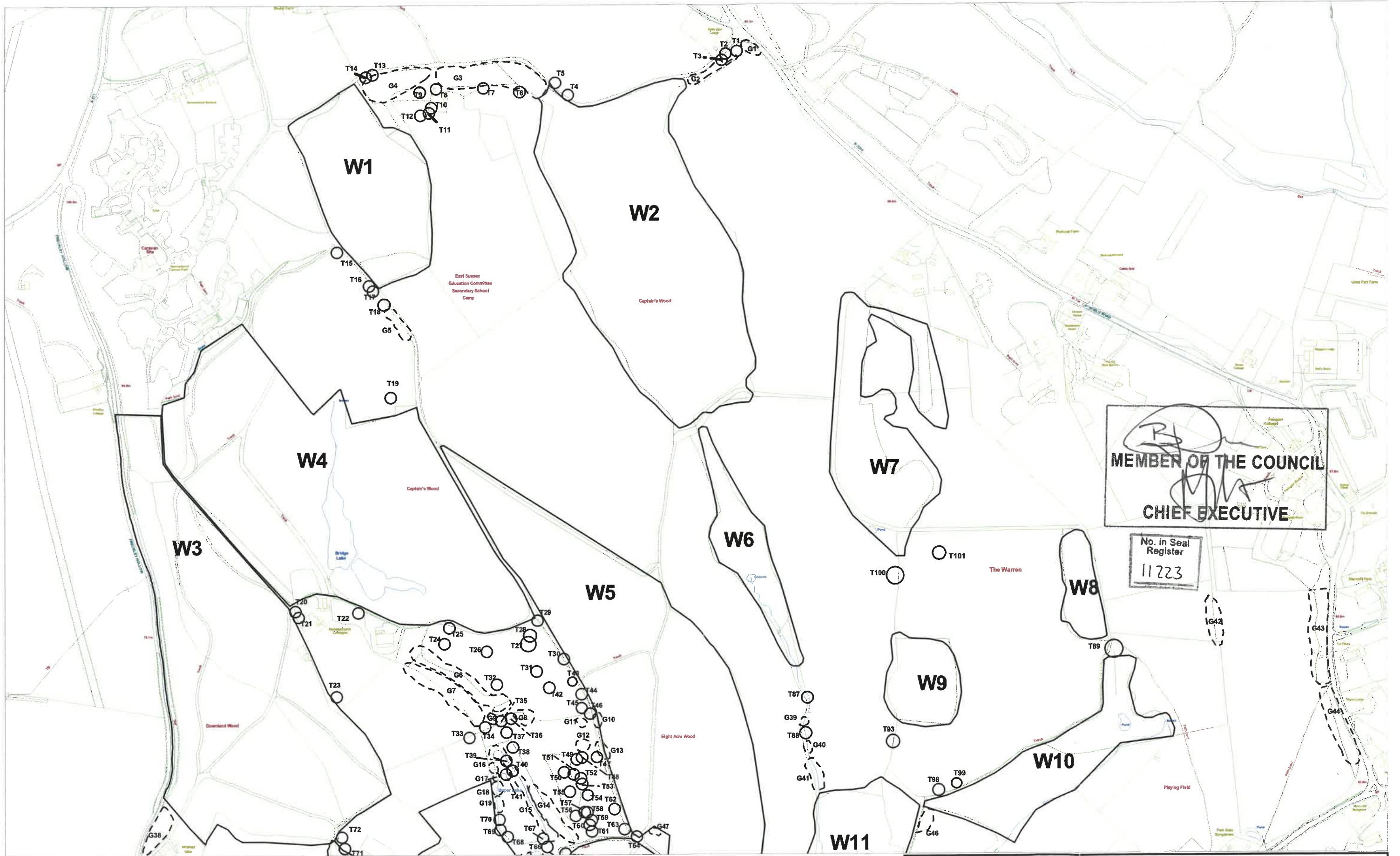


.....  
Chief Executive, Rother District Council



.....  
Member of the Rother District Council

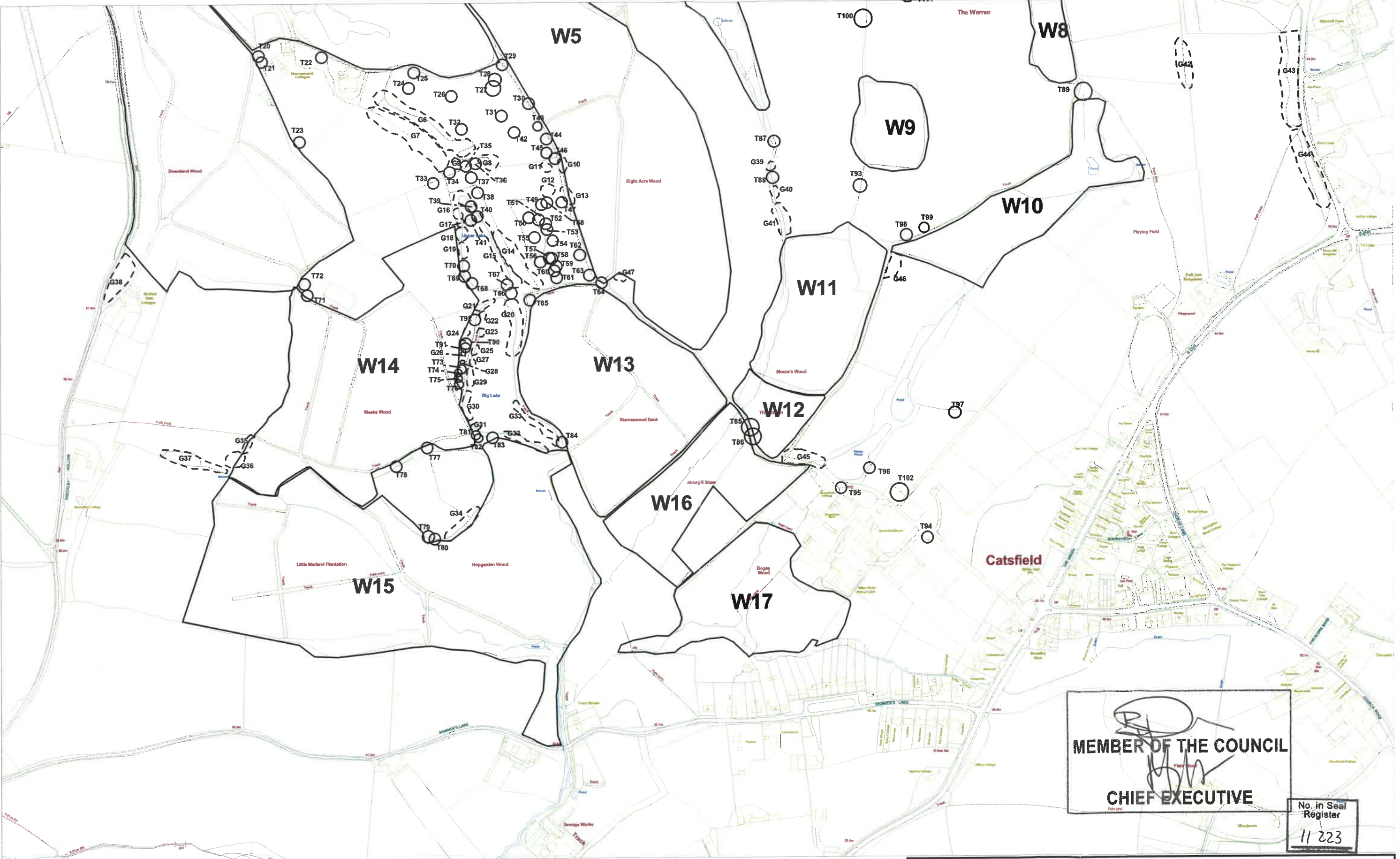




Title: Normanhurst Estate TPO Plan 2 North			Drawn:	Survey:
Site Ref./Drawing No.	Scale: 1:4500	Date: 22/12/2022	Map Reference: TQ7114	
Reproduced from the Ordnance Survey Mapping with the permission of Her Majesty's Stationery Office (C) Crown Copyright. Unauthorised reproduction infringes Crown Copyright and may lead to prosecution or civil proceedings. Rother District Council Licence No 100018643 2022.				

**ROTHER DISTRICT COUNCIL**  
Neighbourhood Services





Title: Normanhurst Estate TPO Plan 1 South		Drawn:	Survey:
Site Ref./Drawing No.	Scale: 1:4500	Date: 22/12/2022	Map Reference: TQ7113
Reproduced from the Ordnance Survey Mapping with the permission of Her Majesty's Stationery Office (C) Crown Copyright. Unauthorised reproduction infringes Crown Copyright and may lead to prosecution or civil proceedings. Rother District Council Licence No 100018643 2022.			

MEMBER OF THE COUNCIL  
CHIEF EXECUTIVE

No. in Seal Register  
11 223

ROTHER DISTRICT COUNCIL

Neighbourhood Services

## SCHEDULE

### Specification of trees

#### Trees specified individually (encircled in black on the maps)

<i>Reference on map</i>	<i>Description</i>	<i>Situation</i>
T1 – T102	See attached Tree Schedule	The Normanhurst Estate, Catsfield, Battle, East Sussex

#### Trees specified by reference to an area (within a dotted black line on the map)

<i>Reference on map</i>	<i>Description</i>	<i>Situation</i>
	None	

#### Groups of trees (within a broken black line on the maps)

<i>Reference on map</i>	<i>Description (including number of trees of each species in the group)</i>	<i>Situation</i>
G1 – G47	See attached Tree Schedule	The Normanhurst Estate, Catsfield, Battle, East Sussex

#### Woodlands (within a continuous black line on the maps)

<i>Reference on map</i>	<i>Description</i>	<i>Situation</i>
W1 – W17	See attached Tree Schedule	The Normanhurst Estate, Catsfield, Battle, East Sussex

NORMANHURST ESTATE TPO439, TREE SCHEDULE	
Plan Ref	Description
W1	Mixed trees including Common beech; English oak; silver birch; sweet chestnut
W2	Mixed trees including Corsican pine; English oak; sweet chestnut; silver birch, Ash
W3	Mixed trees including Oak, Scots pine; sweet chestnut; holly; hazel; birch; rowan
W4	Mixed trees including Silver birch; common beech; sweet chestnut; English oak; goat willow;
W5	Mixed trees including Sweet chestnut; silver birch; English oak; hornbeam; hazel; larch, Sycamore, Ash
W6	Mixed trees including Willow, Alder, Birch
W7	Mixed trees including Sweet chestnut, Oak, Beech, Beech, Hornbeam, Pine
W8	Scots pine
W9	Sycamore; Scots pine
W10	Mixed trees including English oak; common alder; hazel; silver birch; poplar
W11	Mixed trees including English oak; sweet chestnut; alder; silver birch; hazel
W12	Mixed trees including Sweet chestnut; hybrid black poplar; silver birch; holly
W13	Mixed trees including Sweet chestnut; silver birch; English oak; common beech; hazel; sycamore; Ash
W14	Mixed trees including Oak; sweet chestnut; holly; hazel, Birch, Sweet chestnut; goat willow; sycamore, Douglas fir, Scots pine, Larch, Beech, Sycamore, Ash
W15	Mixed trees including Sweet chestnut; birch; hazel; holly; Douglas fir; Western hemlock, Alder, Oak, Goat willow
W16	Mixed trees including Sweet chestnut; silver birch; English oak; common beech; hazel; sycamore; Ash
W17	Mixed trees including Sweet chestnut; silver birch; English oak; common beech; hazel; sycamore; Ash
G1	3 x Holm oak
G2	2 x English oak, 5 x Silver birch 8 x Scots pine
G3	Silver birch, Goat willow, Sycamore, Hazel 1 x Douglas fir, 3 x redwood, 70 x Sycamore 70 x Birch. 1 x Scots pine, 1 x Lime
G4	6 x Silver birch, 6 x Goat willow, 5 x Sycamore, 7 x Sweet chestnut. 10 x English oak 1 x Douglas fir
G5	10 x English oak
G6	80 x Silver birch, 10 x Oak, 10 x Willow
G7	11 x Black poplar, 10 x English oak, 9 x Silver birch
G8	4 x English oak



G9	4 x English oak
G10	3 x Hornbeam
G11	2 x English oak
G12	2 x English oak 1 x Ash
G13	6 x Hornbeam & 3 x Holly
G14	40 x Black poplar, 39 x Birch, 30 x 15 xx Sycamore, 41 x English oak
G15	5 x Goat willow, 8 x Alder & 9 x Sycamore
G16	2 x Alder
G17	6 x Goat willow, 5 x Alder & 3 x Sycamore
G18	2 x English oak
G19	3 x Goat willow, 7 x Alder & 5 x Sycamore
G20	20 x Corsican pine; 3 x Holm oak; 2 x Alder
G21	6 x Scots pine, 10 x Alder; 5 x Sycamore; 4 x Goat willow
G22	5 x Common alder; 3 x birch; 3 x goat willow
G23	6 x Common alder
G24	11 x Beech
G25	5 x Common alder; 2 x Silver birch
G26	11 x Beech
G27	5 x Common alder
G28	3 x Sycamore; 2 x Douglas fir
G29	9 x Common alder
G30	10 x Common alder; 8 x Silver birch
G31	6 x Common alder
G32	7 x Common alder
G33	4 x English oak , 4 x Common alder, 18 x Silver birch
G34	3 x Holm oak 1 x Sweet chestnut
G35	6 x Sweet chestnut; 2 x Hazel
G36	2 x Ash; 28 x Sweet chestnut; 5 x Alder; 5 x Hazel;
G37	6 x Hazel; 15 x Crack willow; 15 x Goat willow; 5 x Holly
G38	6 x Beech; Oak; 9 x Silver birch; 20 x Sweet chestnut; 5 x Hazel
G39	2 x Common alder
G40	3 x Common alder
G41	6 x English oak
G42	30 x Beech
G43	3 x Ash; 5 x Hawthorn; 7 x Blackthorn, 22 x English oak 3 x Corsican pine 23 x Holm Oak, 1 x Ash
G44	9 x Hawthorn; 7 x Blackthorn; 11 x Holly, 30 x English oak, 7 x Ash
G45	7 x English oaks
G46	11 x Alder
G47	4 x Silver birch
T1	English oak
T2	English oak
T3	Holm oak
T4	Sweet chestnut
T5	Sweet chestnut
T6	Ash
T7	Douglas fir



T8	English oak
T9	English oak
T10	English oak
T11	English oak
T12	Douglas fir
T13	English oak
T14	English oak
T15	English oak
T16	English oak
T17	English oak
T18	English oak
T19	Corsican pine
T20	English oak
T21	Sweet chestnut
T22	English oak
T23	Atlas cedar
T24	English oak
T25	English oak
T26	English oak
T27	English oak
T28	English oak
T29	English oak
T30	English oak
T31	English oak
T32	English oak
T33	English oak
T34	English oak
T35	English oak
T36	English oak
T37	English oak
T38	Atlas cedar
T39	English oak
T40	English oak
T41	English oak
T42	English oak
T43	English oak
T44	English oak
T45	Sweet chestnut
T46	Atlas cedar
T47	Beech
T48	Corsican pine
T49	Corsican pine
T50	Atlas cedar
T51	Atlas cedar
T52	Norway maple
T53	Norway maple
T54	Norway maple
T55	Atlas cedar
T56	Corsican pine
T57	Corsican pine



T58	Norway maple
T59	Corsican pine
T60	Corsican pine
T61	Sycamore
T62	Ash
T63	English oak
T64	English oak
T65	Redwood
T66	Holm oak
T67	English oak
T68	English oak
T69	Sycamore
T70	Alder
T71	English oak
T72	English oak
T73	Douglas fir
T74	Douglas fir
T75	Western Hemlock
T76	Sycamore
T77	English oak
T78	English oak
T79	Black poplar
T80	Ash
T81	Holm oak
T82	Corsican pine
T83	Holm oak
T84	English oak
T85	English oak
T86	English oak
T87	Alder
T88	Alder
T89	Black poplar
T90	Douglas fir
T91	Sycamore
T92	Silver birch
T93	English oak
T94	English oak
T95	English oak
T96	English oak
T97	Silver birch
T98	English oak
T99	English oak
T100	English oak
T101	English oak
T102	English oak

  
**MEMBER OF THE COUNCIL**  
  
**CHIEF EXECUTIVE**

No. in Seal  
 Register  
 11 223

11 223