

Provision for children and young people

Definition

- 6.1 This type of open space includes equipped play areas, ball courts, skateboard areas and teenage shelters with a primary purpose of providing opportunities for play and social interaction involving children and young people.
- 6.2 The Council's local plan follows NPFA¹ standards (further detail below) with regard to provision for this typology. However contributions are generally only sought on developments of five or more properties where the development is in an area of proven need. A new play space area of 0.1ha is required for developments of 50 dwellings or more although contributions may be sought in areas of deficiency for developments fewer than 50 dwellings. A play strategy has been developed by the Council with the results of this PPG17 study feeding directly into its recommendations and offering a further point of reference for future plans.
- 6.3 As this typology is wide ranging, it was decided to separate play facilities for older children/teenagers from other facilities. The approximate age range for younger children is from 4 years to 12 years and in most situations separate equipment will be necessary for toddlers from other children in this age range. For older children, the approximate age range is from 12 to 16 years of age. It is recognised that there is a lack of range of equipment for this age group in Rother with the usual provision being for skateboarding, basketball or MUGA facilities. Once there is universal coverage for all children in this group it is the Council's intention to provide a better range of equipment. Two standards for quantity and accessibility have been created in order to recognise such differences. Non equipped areas for play have been included within the amenity greenspace category.

Picture 6.1 Rye recreation ground play area (Site ID 48)



¹ The NPFA have undertaken a rebranding exercise and will be known as "Fields in Trust" as of June 2007.

Strategic context and consultation

- 6.4 Historically, there has been a long-standing issue of under provision in the District. Despite attempts by the Council to address this, few developments have had provision in line with NPFA standards (0.8 hectares per 1,000) despite local plan policies. However attempts to have a range of equipment in rural towns and villages have had some success with many areas having both a playground for younger children and a facility for older children/teenagers, such as a basketball hoop, multi use games area (MUGA) or skate park.
- 6.5 The results from the young persons' internet survey are covered in depth in Section 4. The main themes to arise from this survey were:
- football was the favourite pastime activity, with swimming being the second most popular
 - meeting with friends, computer based activities and shopping were other favourite pastimes
 - 53% of respondents were interested in out of school sport or play activities
 - Egerton Park was the most popular open space in Rother. However a large proportion of children and young people use sites outside of the District
 - amenity greenspaces were the most popular used typology of open space, followed by play areas then grass pitches
 - most respondents use their favourite open space once or more a week
 - the most popular reason for using open space was to play on sports facilities either with friends or with a team
 - 41% of respondents stated that they feel unsafe in open spaces in their local area
 - there is a wide range of new facilities and equipment requested from young people including specialised play equipment, youth centres and swimming pools.
- 6.6 However it should be noted that a large proportion of respondents to the survey were from schools in the Bexhill area.

Setting provision standards

- 6.7 In setting local standards for the provision for children and young people, there is a need to take into account any national or local standards, current provision, other local authority standards for appropriate comparison, site assessments and consultation on local needs. Full details of consultation and justifications for the recommended local standards are provided within Appendix G, H and I.

Quantity

- 6.8 There are currently 57 play areas in Rother District. The total area of these sites is 4.59ha which equates to an average site size of 0.08ha. In addition to these play areas there are 24 sites for teenagers (Battle Recreation Ground and Seabourne Road both have two individual pieces of equipment but counted as one teenage facility at each site) with a total area of 1.69ha and an average site size of 0.07.

Table 6.1 Analysis area breakdown

Analysis area	Number of children sites	Total hectares	Number of teenager sites	Total hectares
Bexhill	17	1.32	9	0.75
Battle	2	0.17	2	0.04
Rye	3	0.39	3	0.17
West Rother ²	19	1.41	7	0.44
East Rother	16	1.3	3	0.29

- 6.9 Table 6.1 shows that the Bexhill and West Rother analysis areas have the largest total number of sites dedicated to facilities for children and young people or teenagers. The largest *area* of facilities is in the Bexhill analysis area. The Battle area has both the smallest area dedicated to this typology and the smallest number of sites.
- 6.10 The NPFA's Six Acre Standard is the main national standard for the provision of children and young people's facilities. This stipulates there should be 2.4 ha of outdoor playing space per 1000 population, consisting of 0.8ha per 1000 population for children's playing space, including casual or informal playing space within housing areas.
- 6.11 Consultation via the household survey showed that 42% of respondents felt that the current level of play facilities for young children was about right or too much. 19% felt that current provision levels were nearly enough and 25% not enough. For facilities for teenagers and older children, only 12% believed provision levels to be about right or too much. 10% felt provision levels to be nearly enough and 59% believed provision levels were not enough, which is reflective of the fact that there are far fewer facilities for teenagers in place.
- 6.12 Unlike some other typologies, the same quantity standard has been set for all analysis areas of the District. This is because it is believed to be important and achievable for children in all urbanised areas to have equal opportunities to access play facilities.
- 6.13 Separate standards have been set for facilities for younger children and older children/teenagers, although the quantity standards arrived at are identical. There was a strong indication that provision levels for older children are not enough, therefore the standard has been set at a significantly higher level than the current level of provision (from 0.020ha per 1,000 population to 0.2ha per 1,000).

**RECOMMENDED LOCAL
QUANTITY STANDARD**

*0.20 hectares per 1,000
population for younger
children*

*0.20 hectares per 1,000
population for teenagers*

² The play area at Burwash Common (ID 862) has been counted in both categories due to its range of equipment.

- 6.14 The strength of feeling towards provision for younger children was not as strong, therefore a smaller increase from the current provision level of 0.05ha per 1,000 population to 0.2ha per 1,000 population is proposed.

Quality standard

- 6.15 NPFA guidance on Local Areas for Play (LAPs), Local Equipped Areas for Play (LEAPs) and Neighbourhood Equipped Areas for Play (NEAPs) sets out quality aspirations. These include providing seating for adults, a varied range of equipment and teenagers' meeting places.
- 6.16 The household survey revealed that the misuse of sites and the safety/age of equipment were seen as the most significant problems. The most common minor problems were vandalism/graffiti, dog fouling and litter problems.
- 6.17 Consultation with children provided many generalised comments about not feeling safe at sites. Aspirations for improvements include lighting, cameras and staff on site.
- 6.18 The recommended local quality standard sets out the vision for new provision and a benchmark for existing play facilities to achieve through enhancement. Only one quality standard has been set, encompassing both younger and older children/teenagers as it is felt that the quality aspirations for both groups are similar.
- 6.19 From the household survey and other consultations, the highest rated quality aspirations were to be clean and litter free, have well kept grass, seating, toilets and a dog free area.
- 6.20 The suggested quality standard for provision for children and young people should reflect the NPFA's standards for LAPs, LEAPs and NEAPs and include elements of the public's aspirations. The most important safety factors were the reputation of the site, to have adequate lighting and staff on site. It is expected that all sites should be accessible year round in terms of physical access into and within the site. Whilst sites cannot be designed to meet the needs of every child, they should address the issue of inclusion by meeting the requirements of the Disability Discrimination Act (1995 – and as amended by subsequent legislation) at a minimum and offer a range of play experiences and opportunities for social interaction.

RECOMMENDED LOCAL QUALITY STANDARD

"A site providing a range of well-maintained equipment in a safe and secure location. It should be easily accessible whilst safeguarding the residential amenity of neighbouring land users. The site should have clear boundaries, be within a reasonable distance of residences, be clean, litter and dog free/controlled, and provide ancillary facilities where appropriate (eg benches, litter-bins and toilets). The planning, design and maintenance of the site should take into account the 'Best Play' enriched play environment criteria and complement and utilise the natural environment and landscape within which it is set."

- 6.21 Appendix I interprets this quality standard into scores to guide the quality of new and existing children's and young people's facilities and, if required, provide an additional level of detail about the individual sites.

Accessibility standard

- 6.22 There are national accessibility standards for LAPs, LEAPs and NEAPs:
- LAPs: aged 4-6 years; 1 minute walk or within 100 metres
 - LEAPs: aged a minimum of 5 years; or within 5 minutes (400m) walking time along pedestrian routes
 - NEAPs: aged a minimum of 8 years; and should be located within 15 minutes (1.2km) walking time along pedestrian routes.
- 6.23 In addition to the walktime distances, the NPFA standards state minimum distances from which play sites should be located to residential properties. This is typically 30 metres for a NEAP and 5 metres for a LEAP. It is expected that all new provision would adhere to such guidelines.
- 6.24 Consultation with children/teenagers showed that the majority walk to their nearest open space. However a sizable minority (17%) drove or were driven. The overwhelming aspiration was to either walk (37%) or cycle (33%). The majority of children (57%) walk less than 10 minutes their nearest open space.
- 6.25 The household survey revealed that the majority of residents in all analysis areas aspired to walk to their nearest children's facility. The same was true for teenage facilities except for residents in West Rother who expressed a preference to drive. The 75th percentile response regarding children's facilities was on the cusp of the 10/15 minute division for travel time. The 75th percentile for teenager facilities fell clearly at 15 minutes.
- 6.26 Taking into account the results from the children's internet survey, it is proposed that the accessibility standard for children is set at a 10 minute walktime whilst a 15 minute walktime is set for teenage facilities, in line with the 75th percentile result of the household survey. A 10 minute walktime equates to 800m along roads and footpaths or around 480m as a straight line radius. A 15 minute walktime equates to 1200m along roads and footpaths or around 720m as a straight line radius.

RECOMMENDED LOCAL ACCESSIBILITY STANDARD

10 minute walktime (800m) for younger children

15 minute walktime (1200m) for older children and teenagers

Minimum acceptable size standards

- 6.27 With regards to the minimum size standards there are national standards for LAPs, LEAPs and NEAPs, these are:
- LAPs – a minimum size area of 100 square metres
 - LEAPs – a minimum size area of 400 square metres
 - NEAPs – a minimum size area of 1000 square metres.

Site area multipliers

6.28 For planning purposes there is a need to determine site area multipliers to determine the area of space required for development of play areas. The national standards for this are:

- LAPs – activity zone 100 square metres plus a 5m buffer zone on all residential sides. Site area multiplier – 4.0 if a residential area on all sides
- LEAPs – activity zone 400 square metres plus a 20m buffer zone on all residential sides. Site area multiplier – 9.0
- NEAPs – activity zone 1000 square metres plus a 30m buffer zone on all residential sides. Site area multiplier – 10.0.

Design guidelines

6.29 For facilities catering for the provision of children and young people there are a series of design guidelines which the Council should consider. Other requirements for LAPs, LEAPs and NEAPs include signage and fencing. The national guidelines for LAPs, LEAPs and NEAPs are:

- LAPs – small toys, grass or hard surface, seating for carers, activity and buffer zone to reduce resident disturbance (for children 4-6 year)
- LEAPs – at least five items of equipment, equipment surface to comply with British Standards, grass/hard surface play area, within 5 minutes walk from home, activity and buffer zone, seating for accompanying adults (children 4-8 years)
- NEAPs – at least eight items of equipment, equipped surface to comply with British Standards, 'kickabout/wheeled play' area, seating for adults/teenage meeting, landscaped, within 15 minutes of home, activity and buffer zone (children 8-14 years).

6.30 European Standards EN1176 and EN1177 have been published to harmonise existing European standards. Non-conformity to these standards does not mean that a play area is unsafe therefore these standards should be borne in mind when making provision rather than adhered to rigidly. The standards comprise seven parts:

- 1) General safety requirements and test methods
 - including structural integrity, handrails, guardrails and barriers, minimum space
- 2) Additional specific safety requirements and test methods for swings
 - including ground clearance, minimum space, framework
- 3) Additional specific safety requirements and test methods for slides
 - starting section and runout, slide surface and angle
- 4) Additional specific requirements and test methods for runways
 - including stops, seat impact test and speed

- 5) Additional specific requirements and test methods for carousels
 - including axis, speed of rotation and ground clearance
- 6) Additional specific requirements and test methods for rocking equipment
 - including restraint of motion, hand supports and limits of motion
- 7) Guidance on installation, inspection, maintenance and operation
 - including routine visual inspection, operational inspection and annual main inspection, maintenance and documentation.

Applying provision standards – identifying geographical areas

- 6.31 In order to identify important geographical areas and areas with local needs we apply the quantity and accessibility standards together. The quantity standards enable the identification of areas that do not meet the minimum provision standards, while the accessibility standards help determine where those deficiencies are most important.
- 6.32 In terms of the application of standards for new developments, there may be a conflict between the quantity standard and accessibility standard. Eg, a new development may require two playareas to ensure full accessibility coverage for new residents however the quantity standard might not be of a level equivalent to two playareas. In such situations the Council should direct the developer to prioritise the accessibility standard over the quantity standard. The playareas provided should still be sized in relation to industry standards such as the NPFA's LEAPs and NEAPs.
- 6.33 In addition to the accessibility and quantity requirements for new playareas from new developments, there is also the issue of on-going maintenance. Following PPG17 guidance, it is recommended that the Council seek commuted maintenance sums for the upkeep of new play equipment for a minimum of ten years. This policy is also of relevance where improvements are being made to existing playareas, rather than the provision of new playareas.

Younger children

- 6.34 Map 6.1 overleaf provides a 10 minute walktime catchment area for each play area in the District. In the Western Rother analysis area the main area without provision is west Robertsbridge. There are some minor gaps around the periphery of smaller settlements. However providing new play areas to fill such gaps is not recommended as they are likely to be used by few children.

CYP 1

New play area to be delivered as a medium priority in west Robertsbridge.

- 6.35 Compared to the West Rother analysis area, there are a large number of provision gaps in the East Rother area. There are three main areas where new provision should be prioritised, north Northiam, Brede and Cliff End. These sites are prioritised over those below due to the greater number of children that they would serve.
- 6.36 In addition to the areas above without provision, there are a large number of settlement areas where one play area poorly serves an entire area. The Council should look to provide new facilities in Fairlight Cove, North Winchelsea, Beckley and Peasmarch. The area of Camber is also poorly served however it is not felt that new

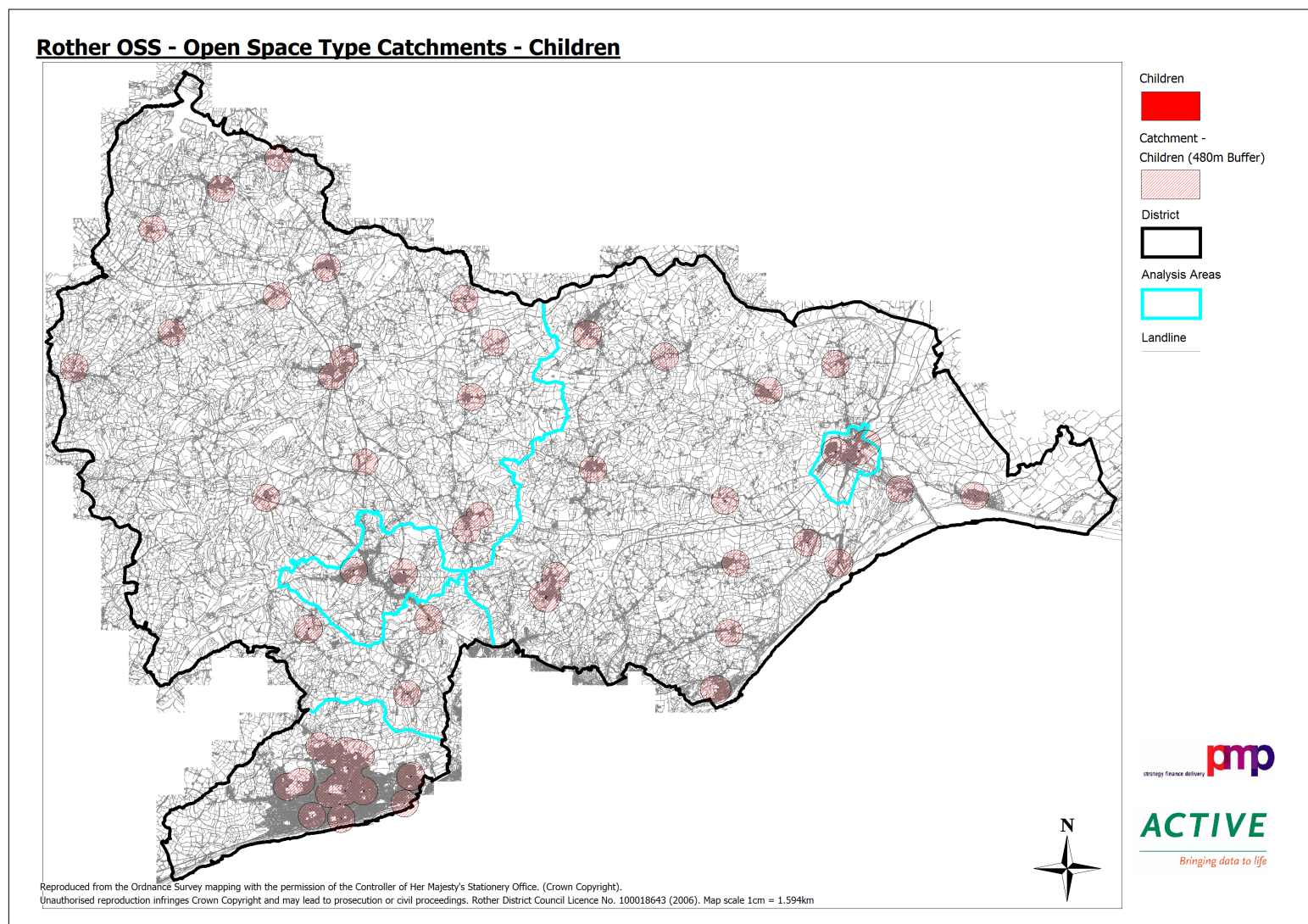
provision is the most logical answer here. The area currently has a large number of facilities at its two holiday camps that are unavailable to residents. In the long term the Council should negotiate to open up these facilities to residents, possibly as part of future Section 106 agreements.

CYP 2	New play areas in north Northiam, Brede and Cliff End should be high priorities. New play areas in Fairlight Cove, North Winchelsea, Beckley and Peasmarsch should be medium term priorities.
CYP 3	In the long term the Council should seek to negotiate public access to the leisure facilities at the holiday camps in the Camber area. If this is unsuccessful, new provision should be pursued as a low priority.

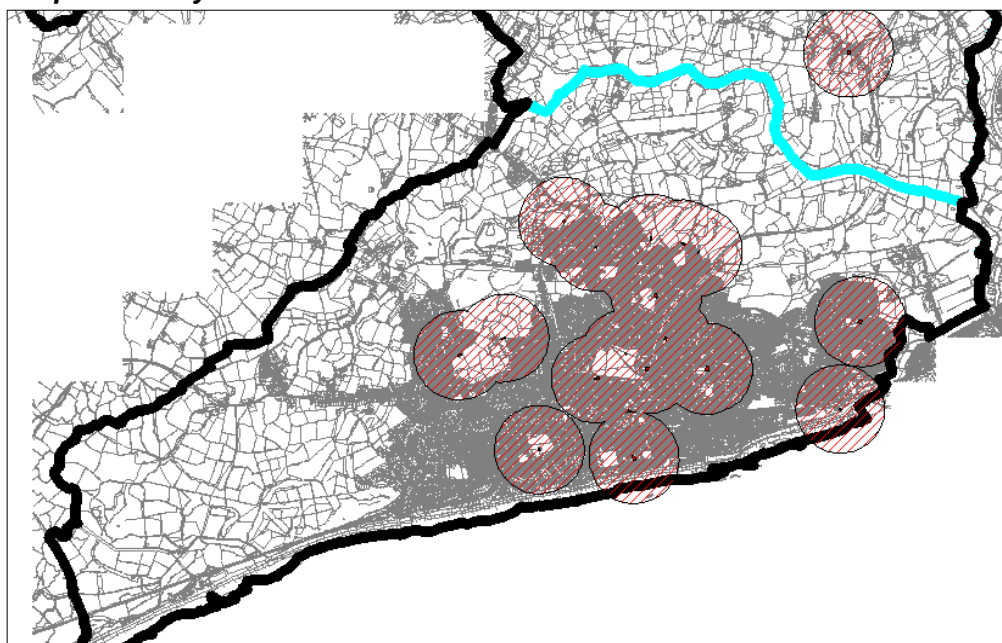
- 6.37 The situation for the remaining three analysis areas is examined in more detail from paragraph 6.37 onwards.

SECTION 6 – PROVISION FOR CHILDREN AND YOUNG PEOPLE

Map 6.1 **Accessibility catchment for children's play areas**



Map 6.2 Play areas in Bexhill



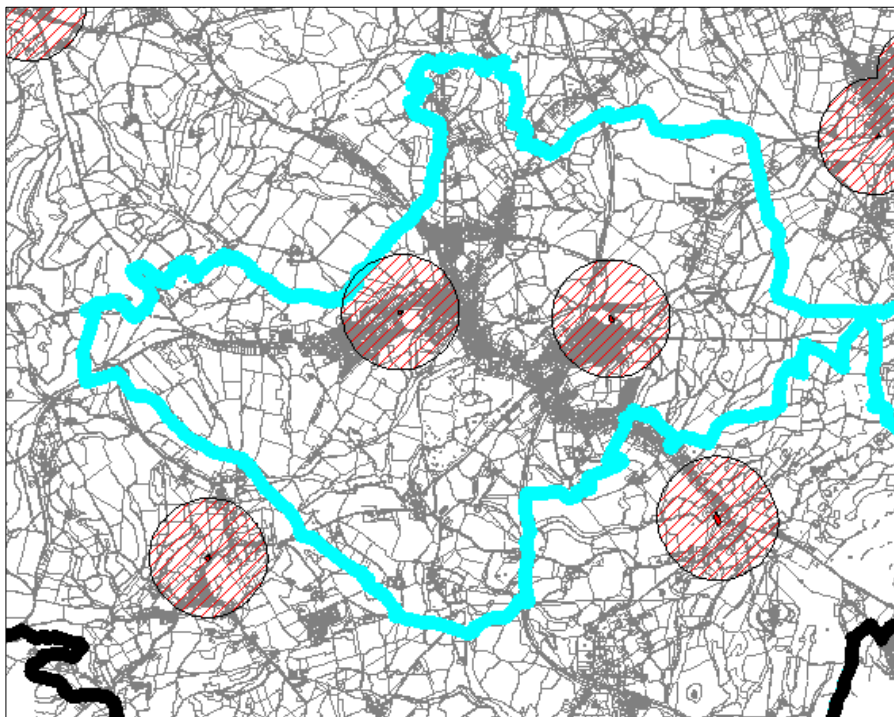
- 6.38 Map 6.2 shows that there are a large number of areas within the Bexhill analysis area without provision of a play area within 10 minutes walk. It would require in the region of nine new play areas to achieve full coverage of the area. However the historical nature of the area means that full coverage is unlikely to ever be achieved due to a lack of available areas for new sites and it is recognised that development pressures make the identification of new play area sites difficult without large-scale redevelopment.
- 6.39 There are, however, some good opportunities to increase coverage through new provision. In the northeast, there is comprehensive residential development planned in northeast Bexhill. The Council should ensure that as well as serving any new residents, play areas should be situated so that they also serve existing residents that are poorly served by placing facilities on the edge of the development area.
- 6.40 In the Pebsham area of Bexhill, the dense urban layout makes new play area sites problematic so again it is recommended that play areas be situated on the periphery of the urban area. Other key areas where new play areas may be possible would be in Penland Wood and/or the playing fields next to St Richard's Catholic College.
- 6.41 In the west of Bexhill, the site best situated for a new play area is the vicinity of Gillham Wood in Cooden. Aside from this site, the best opportunities are again situated on the edge of the built up area.

CYP 4	The Council to endeavour that new play areas in northeast Bexhill residential development contain play areas that are situated so that they serve not only potential new residents but also existing residents without provision.
CYP 5	Gillham and Penland Wood should be considered for new play area provision, as should the land around St Richard's Catholic College.

CYP 6

The Council to consider new play areas on the edge of all urban areas of Bexhill that do not currently have provision.

Map 6.3 Play areas in Battle



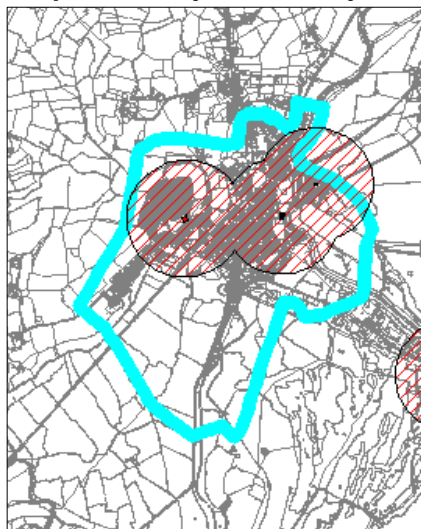
6.42 The Battle area contains two play areas located in the central and eastern areas but leave the southern, northern and western areas without access within the accessibility standard set. The Council should look to prioritise new play areas to the south and north in the first instance due to the greater number of residents living in these areas.

6.43 The Local Plan proposes housing around the Blackfriars area of Battle, close to the station. This development should look to include at least one new play area to increase coverage in this area. Other key sites to be considered for new play areas should be the playing field in the Glengorse area and near to the western entrance of Great Wood. In the north the Council should aim for new provision around the Old Mill site as this has the potential to serve the greatest number of residents.

CYP 7

The Council to consider new provision as part of the housing development in Blackfriars Battle, Glengorse playing field, Great Wood and around the Old Mill in north Battle.

Map 6.4 Play areas in Rye



- 6.44 The Rye analysis areas has a good coverage for play areas with only small sections of the north and south of the urbanised area lacking coverage within a 10 minute walk. Therefore the Council should concentrate upon qualitative improvements rather quantitative in this area.

CYP 8

The Council should prioritise improvements to existing play areas in the Rye analysis area over provision in new locations.

Older children/teenagers

- 6.45 Map 6.5 overleaf provides a 15 minute catchment area around each facility for older children and teenagers in the District. As per play areas, the main priority area for new provision in the west Rother analysis area is Robertsbridge. Ideally two facilities are needed to address the deficiency however due to a lack of available funds it is recommended that one centrally located facility be built in the short term. Sites that should be considered include Fair Ridge Wood, Robertsbridge Recreation Ground and the two new areas for proposed housing in the Local Plan.
- 6.46 In Hurst Green there is also a lack of facilities however new provision here should be prioritised behind Robertsbridge due to the smaller population. Possible sites in this area include Drewett Cricket Field and Burgh Wood. There is also no provision in Crowhurst and Catsfield. However these areas are a low priority for the Council due to the small population in this area and it should therefore only be advanced at this time if Section 106 monies are available through a windfall site in this area.

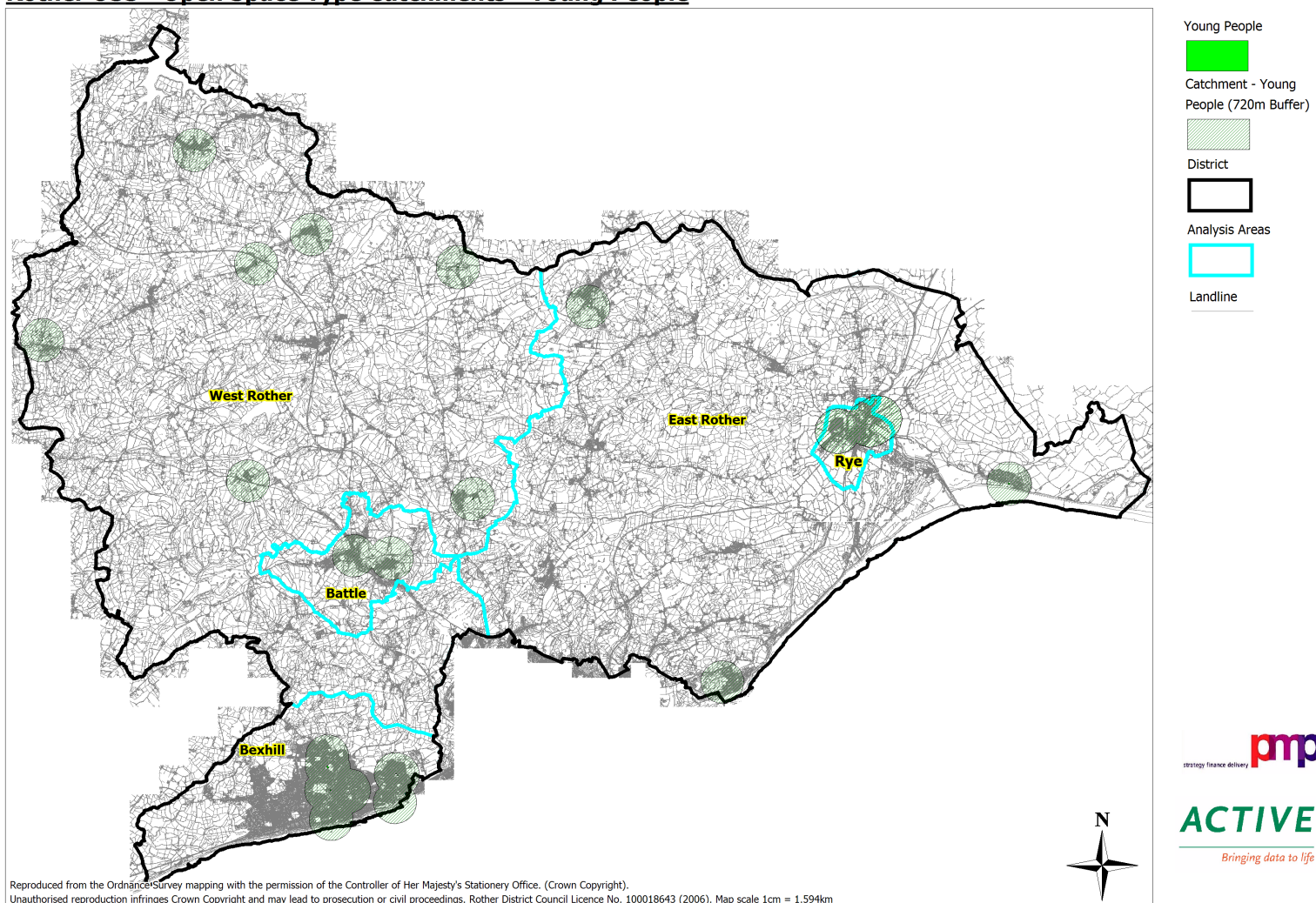
CYP 9

New provision in Robertsbridge a priority for the Council. New provision in Hurst Green a medium priority whilst Crowhurst and Catsfield are low priorities.

SECTION 6 – PROVISION FOR CHILDREN AND YOUNG PEOPLE

Map 6.5 Accessibility catchment areas for older children/teenager facilities

Rother OSS - Open Space Type Catchments - Young People



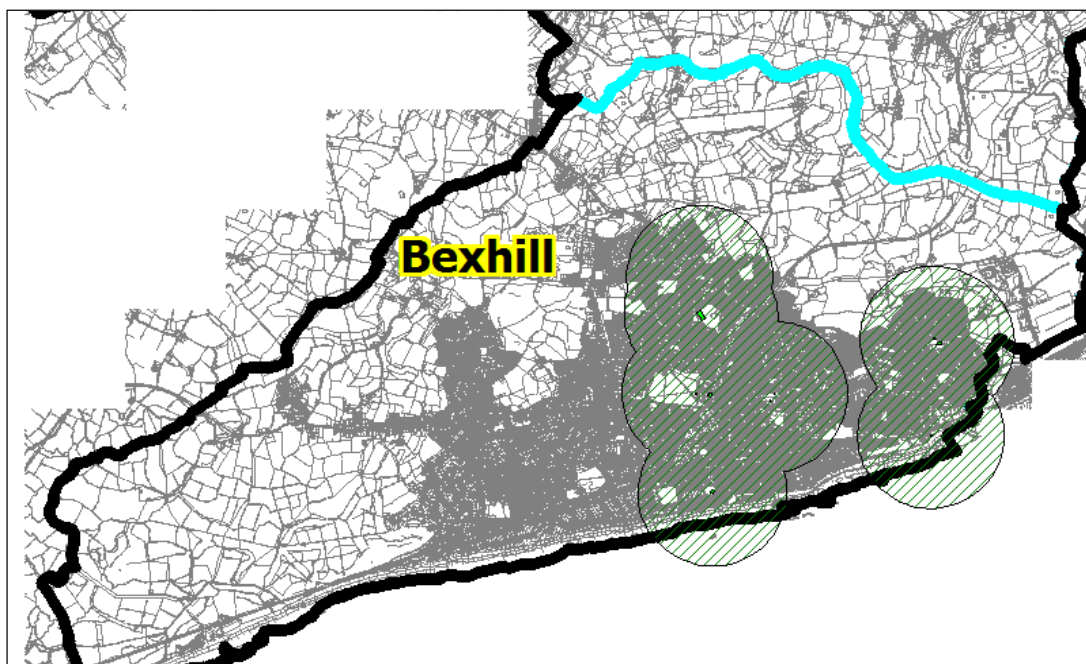
SECTION 6 – PROVISION FOR CHILDREN AND YOUNG PEOPLE

- 6.47 Provision levels in the east Rother analysis area are poor compared to the western area however there are fewer settlements with comparatively large population figures. There is a long-term need for new provision in Westfield, Brede, Fairlight Cove, Rye Harbour, Peasmarch, Broad Oak and Iden.
- 6.48 In the shorter term it is necessary to consider which of these areas has the most realistic chance of gaining such a facility. It is recommended that the Council focus upon Westfield as there are two new housing allocations in this area as well as a proposed public open space at Westfield Down.
- 6.49 In the other areas of East Rother the Council should prioritise new provision according to which areas are able to bring in significant new funds by external means. In most areas this will be dependent upon the will of Parish Councils to fund such a facility.

CYP 10

The Council to focus upon the Westfield area in East Rother for a new facility for older children/teenagers.

Map 6.6 Older children/teenager facilities in Bexhill

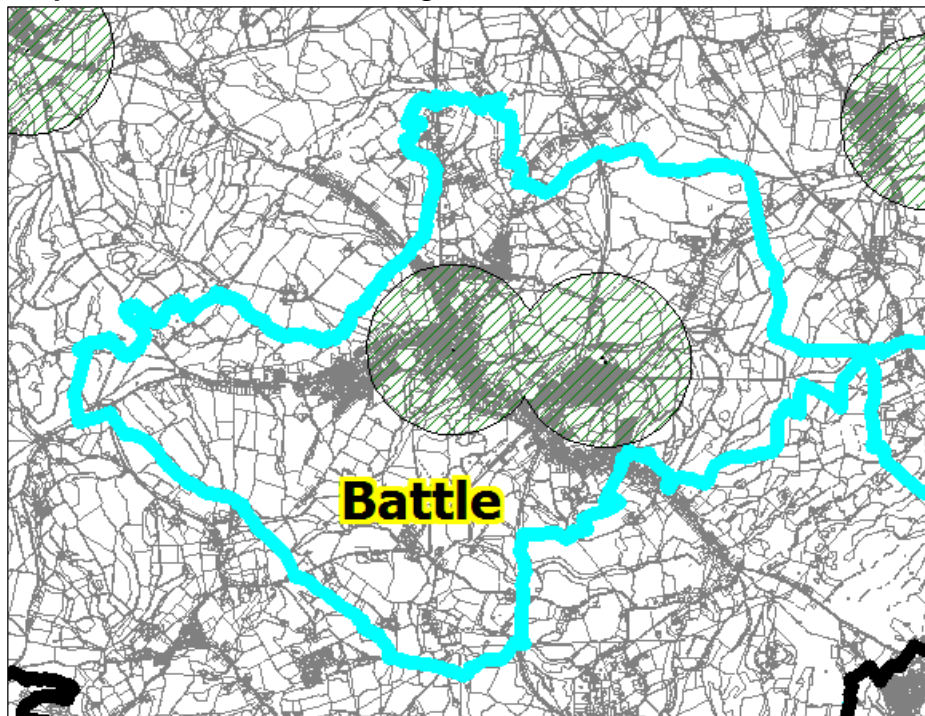


- 6.50 Map 6.6 shows that with the exception of two sites to the east, most provision in Bexhill is centrally located. The Council should focus upon three main new areas in order to increase provision, all in West Bexhill.
- 6.51 It is recommended that a new facility be located in the Little Common area as well as new facilities at or near to Collington Wood and Gillham Wood. It is likely that such a facility in a woodland would meet with resistance from some local residents and therefore alternative sites on the edge of the built up area may need to be considered in such circumstances.

CYP 11

New sites to be considered in the west of Bexhill in Little Common and in or near to Collington Wood and Gillham Wood.

Map 6.7 Older children/teenager facilities in Battle



- 6.52 Map 6.7 shows there is currently only two sites in Battle. The Council should prioritise a new facility to the south of the area. The Local Plan shows significant new housing allocations in this area as well as a proposed school and informal open space. All of these present ample opportunities to provide a new facility on a stand alone basis or as part of the school development. Ideally a new facility should also be considered to the west of Battle however there are less opportunities for new provision in this area.

CYP 12

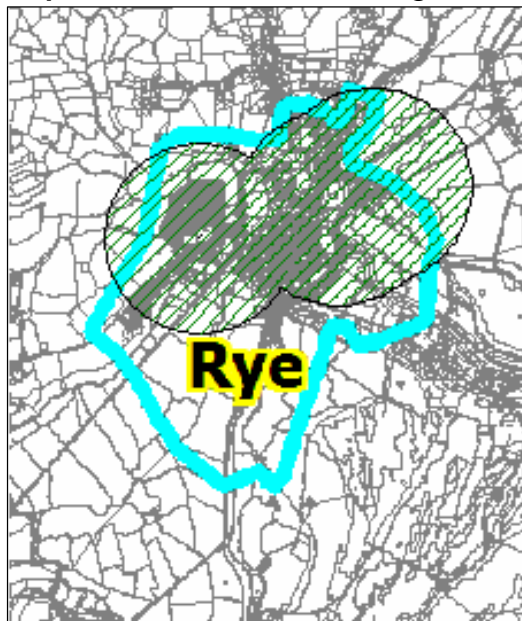
The Council to prioritise a new facility as part of the housing/open space developments in south Battle.

- 6.53 Map 6.8 overleaf shows there are three sites serving the Rye area. The settlement is generally well covered by teenage facilities with the only exception being south of Rye along Winchelsea Road. The size of current facilities is however limited and therefore it should be a focus of the Council to expand and offer a more diverse range of facilities at current sites.

CYP 13

The Council to consider a new facility as part of any new developments ideally to the south of Rye, in addition to expanding and broadening the range of facilities at current sites..

Map 6.8 Older children/teenager facilities in Rye



Value assessment and enriched play

- 6.54 In a national context, open spaces that generally have a high quality score and high accessibility score frequently have a high level of usage as there is a direct correlation between these factors.
- 6.55 Play areas are used relatively highly compared to typologies such as cemeteries and churchyards and rural natural/semi natural sites and they are, therefore, generically of a high value as they have high usage levels. They should be protected unless the quantity of provision exceeds the adopted quantity standards in which circumstance this may be reviewed. Sites should be reviewed in terms of improving accessibility and quality to maintain or increase the value of the site on a site-by-site basis.
- 6.56 There were common themes resulting from the site visits in the District despite the different ownerships of play areas. There were generally a lot of older, tired play areas that would normally fail to produce enriched play opportunities for children. This is reflected in the average enriched play score of less than two out of ten. Such older sites tend to have issues with suitable pushchair and wheelchair access to and within the site, however many did have partial access. Signage was a significant issue with few sites having any signage and those that did failed to provide basic information. Specialised play surfaces were used in most play areas however many of these were showing considerable signs of wear and tear.
- 6.57 There were many positive aspects of play areas. There are a number of newer facilities for older children/teenagers and the Rother District compares favourably to many other local authorities PMP have studied in terms of both quantity and quality. In addition there tended to be good ancillary facilities (eg bins and benches) at a large number of sites and good practice in providing a level of segregation between young children's play equipment and provision of a more active nature such as informal ball games and wheeled sports, for the safety and interests of all users.
- 6.58 Due to the aforementioned similarity between sites in the District, there was not a large difference between the top and bottom scoring sites. The top scoring sites included:

- Egerton Park play area – Bexhill (Site ID 226)
 - Barrack Hall play area – Bexhill (Site ID 230)
 - North Trade Road play area – Battle (Site ID 813).
- 6.59 Normally the higher scoring sites such as these are selected as a benchmark for provision in the District. However this is felt to be inappropriate for Rother District as these sites did not have particularly high scores and they do not reflect the aims and aspirations of the Council. Instead the Council should provide high quality play provision as part of the Egerton Park regeneration project (EPIC) and use this as a benchmark for the rest of the District.
- 6.60 There were a number of sites identified by the site assessment process where it is recommended that specific play areas be prioritised for improvements or replacements. The first of these is the play area at St Mary's Recreation Ground, Bexhill (ID 925). This site suffers from a lack of specialised safety surfacing under the slide, vandalised and poorly maintained equipment. There is a lack of perimeter fencing or adequate byelaws to ensure dog control, therefore dog fouling is an issue.
- 6.61 The two sites at Westfield (ID's 835 and 838) should also be prioritised for improvements by the Council. The equipment is very basic and unappealing, poorly maintained with a lack of fencing on one area that is near to a main road.
- 6.62 The King's Avenue play area, Rye (ID 51) appears to be in an unsafe and unobvious location. Access is poor with difficult pushchair or wheelchair access and a strong need for additional lighting. The play equipment is unimaginative and needs updating.
- 6.63 The last site recommended is Northiam Playing Fields play area. This site's wooden equipment is dated and needs replacing whilst all swings were missing. Access to the site is difficult due to it being across a football pitch prone to flooding or via a poorly maintained footpath.
- 6.64 Crowhurst Parish Council have currently set aside funds for improvements to Crowhurst Lane play area, Bexhill (ID 931). These improvements are welcome as this site has poor accessibility due to its entrance being via a poorly maintained amenity greenspace. The site has also inadequate boundaries and basic, unappealing equipment.
- 6.65 Another way of increasing the value of sites would be through rationalisation. For example in Westfield there are three small, poor quality play areas that serve the area poorly despite their accessibility catchments. In such circumstances rationalisation should be considered as it is possible two larger, good quality areas would serve residents better. It is important that any accessibility barriers, such as a railway lines or busy roads, are taken into account to ensure residents are not obstructed from the improved facilities.

CYP 14

The Council to provide a new play area in the redeveloped Egerton Park to become a quality benchmark for all provision in the District.

Summary and recommendations

- 6.66 Rother District suffers from accessibility, quantity and quality issues at its play areas for both younger and older children/teenagers. Ideally the Council should be looking to provide full coverage for both types of facility throughout the urban areas of the District. However there are capital and maintenance cost implications associated with such a large number of additional play areas. In addition, purely focusing on new provision will heighten problems at current sites which tend to have old, tired and unimaginative equipment.
- 6.67 Therefore it is important that the refurbishment of current sites and the provision of new facilities compliment each other. It is recommended that the Council use the new locations identified by in this report to trial new play facilities that meet its aims and aspirations for enriched play. The knowledge gained can inform the development of a quality benchmark site at Egerton Park and feed into a renewal programme for existing sites in the District. The aim should be to significantly raise the average quality score for each site in the District.

Recommendations for younger children

CYP 1	New play areas to be delivered as a medium priority in west Robertsbridge.
CYP 2	New play areas in north Northiam, Brede and Cliff End should be high priorities. New play areas in Fairlight Cove, North Winchelsea, Beckley and Peasmarsch should be medium term priorities.
CYP 3	In the long term the Council should seek to negotiate public access to the leisure facilities at the holiday camps in the Camber area. If this is unsuccessful, new provision should be pursued as a low priority.
CYP 4	The Council to endeavour that new play areas in northeast Bexhill residential development contain play areas that are situated so that they serve not only potential new residents but also existing residents without provision.
CYP 5	Gillham and Penland wood should be considered for new play area provision, as should the land around St Richard's Catholic College.
CYP 6	The Council to consider new play areas on the edge of all urban areas of Bexhill that do not currently have provision.
CYP 7	The Council to consider new provision as part of the housing development in Blackfriars Battle, Glengorse playing field, Great Wood and around the Old Mill in north Battle.
CYP 8	The Council should prioritise improvements to existing play areas in the Rye analysis area over provision in new locations.

Recommendations for older children and teenagers

CYP 9	New provision in Robertsbridge a priority for the Council. New provision in Hurst Green a medium priority whilst Crowhurst and Catsfield are low priorities.
CYP 10	The Council to focus upon the Westfield area in East Rother for a new facility for older children/teenagers.
CYP 11	New sites to be considered in the west of Bexhill in Little Common and in or near to Collington Wood and Gillham Wood.
CYP 12	The Council to prioritise a new facility as part of the housing/open space developments in south Battle.
CYP 13	The Council to consider a new facility as part of any new developments ideally to the south of Rye, in addition to expanding and broadening the range of facilities at current sites..

Recommendation for all groups

CYP 14	The Council to provide a new play area in the redeveloped Egerton Park to become a quality benchmark for all provision in the District.
---------------	---