

Key to Landscape Capacity

X1

Moderate

Y2

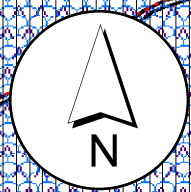
Low

Z3

None

1

Viewpoint and direction



Key

AONB (Area of Outstanding Natural Beauty)

Strategic Gap

Development Boundary

SPA (Proposed Special Protection Area)

SAC (Special Areas of Conservation)

RAMSAR (Wetland of International Importance)

SSSI (Site of Special Scientific Interest)

SNCI (Sites of Nature Conservation Importance)

Ancient Woodland (English Nature)

Protected Species (2005)

Main Rivers

Flood Zone 2 (2008)

Flood Zone 3 (2008)

Groundwater Source Protection Zones (Source)

Groundwater Source Protection Zones (SPZ)

Archaeologically Sensitive Areas

Listed Buildings

Ancient Monuments

Ancient Monuments (2006)

Registered Parks and Gardens (RO)

Registered Battlefields (RO)

Conservation Areas

Rights of Way. Footpath

Rights of Way. Bridleway

Rights of Way. Byway

Rights of Way. Road Used as a Public Path

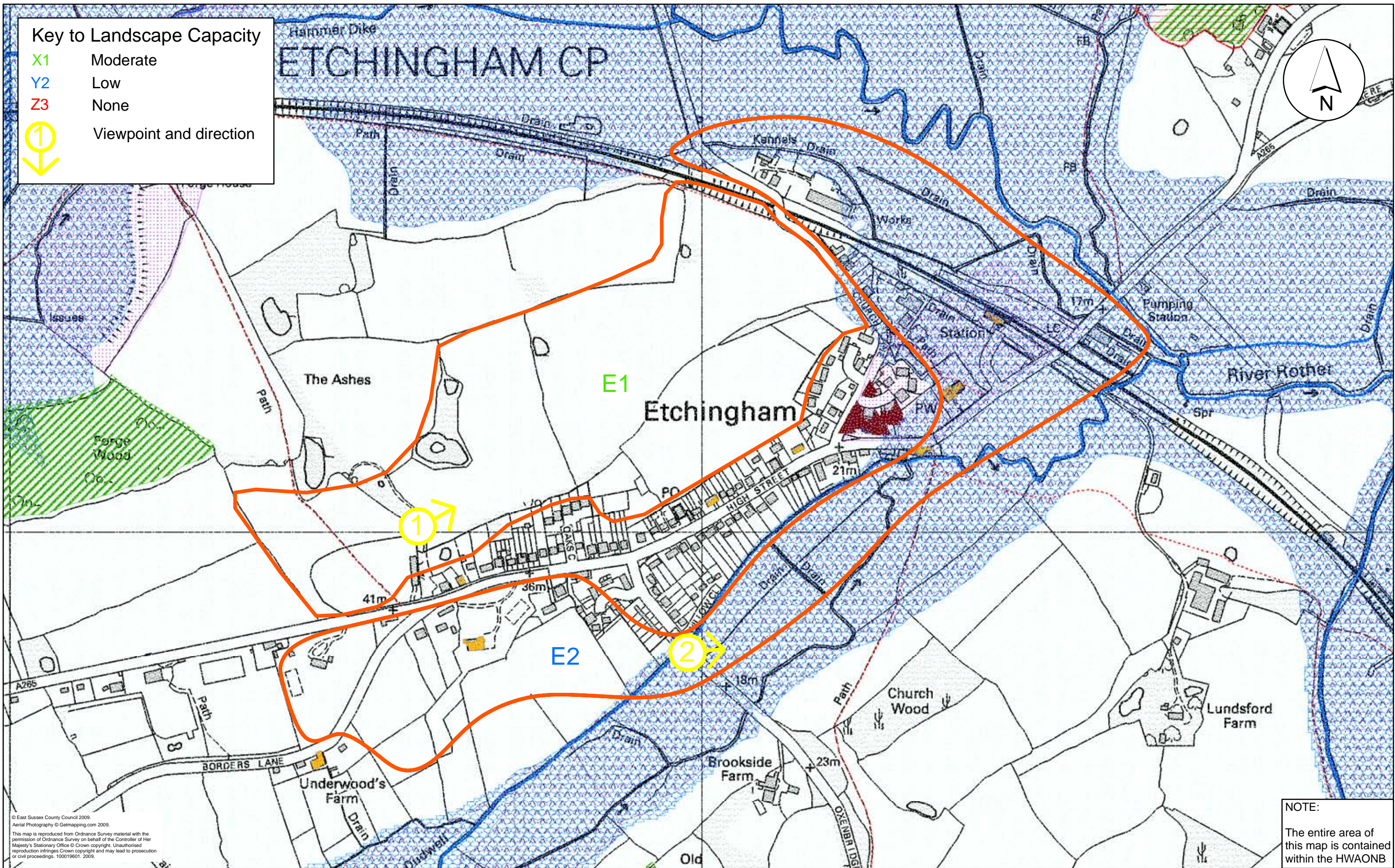
TPO (Tree Preservation Orders - Individual Trees/Small Groups)

TPO (Tree Preservation Orders - Woodland)

Rother DC LDF Core Strategy
Market Towns and Villages
Landscape Assessment

Drawing: East Guldeford

Scale: 1:5,000 Figure 40



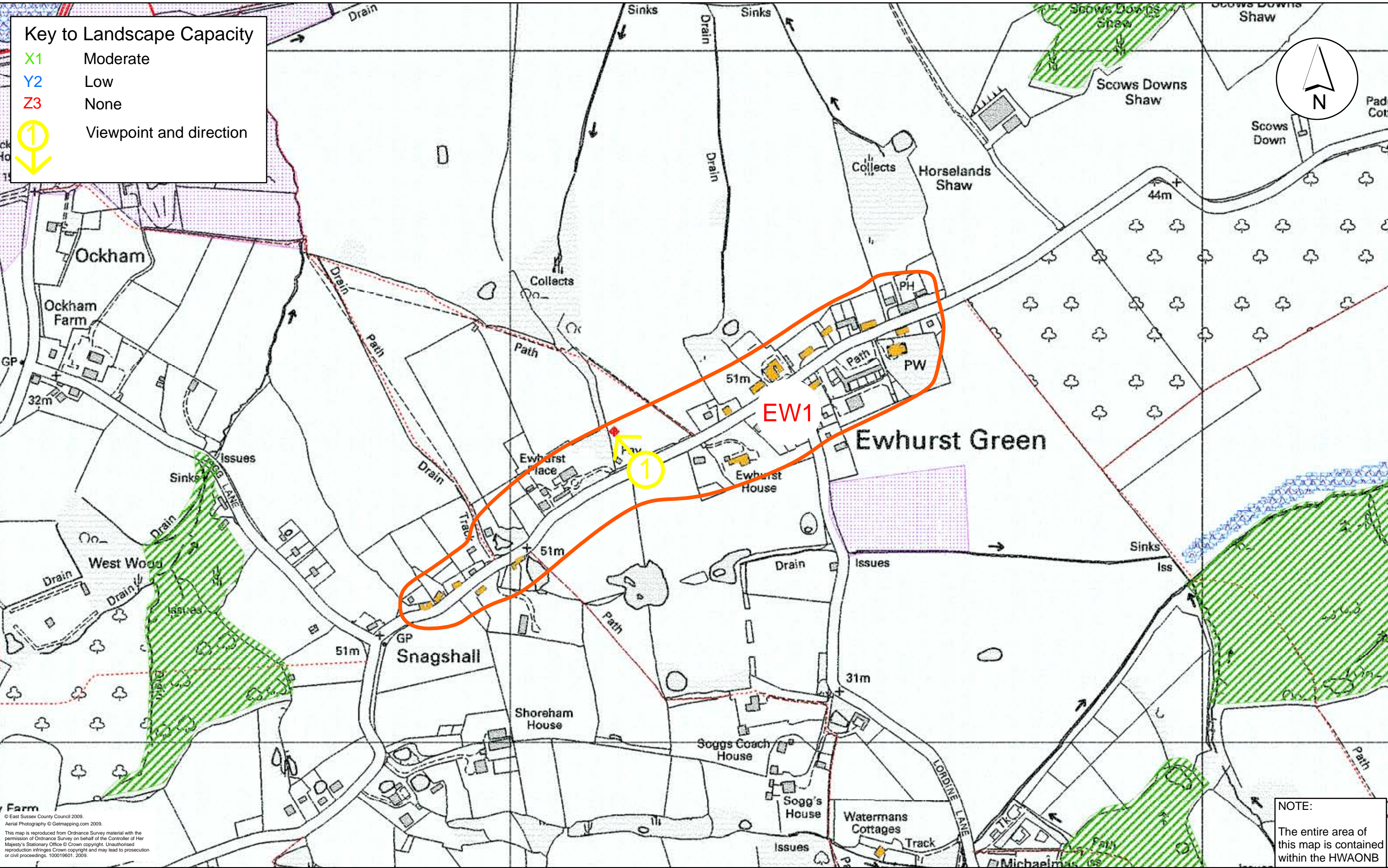
Key			
AONB (Area of Outstanding Natural Beauty)	RAMSAR (Wetland of International Importance)	Main Rivers	Archaeologically Sensitive Areas
Strategic Gap	SSSI (Site of Special Scientific Interest)	Flood Zone 2 (2008)	Listed Buildings
Development Boundary	SNCI (Sites of Nature Conservation Importance)	Flood Zone 3 (2008)	Ancient Monuments
SPA (Proposed Special Protection Area)	Ancient Woodland (English Nature)	Groundwater Source Protection Zones (Source)	Ancient Monuments (2006)
SAC (Special Areas of Conservation)	Protected Species (2005)	Groundwater Source Protection Zones (SPZ)	Registered Parks and Gardens (RO)
		Registered Battlefields (RO)	Conservation Areas
		Rights of Way, Footpath	Rights of Way, Bridleway
		Rights of Way, Byway	Rights of Way, Road Used as a Public Path
		TPO (Tree Preservation Orders - Individual Trees/Small Groups)	TPO (Tree Preservation Orders - Woodland)

Rother DC LDF Core Strategy
Market Towns and Villages
Landscape Assessment

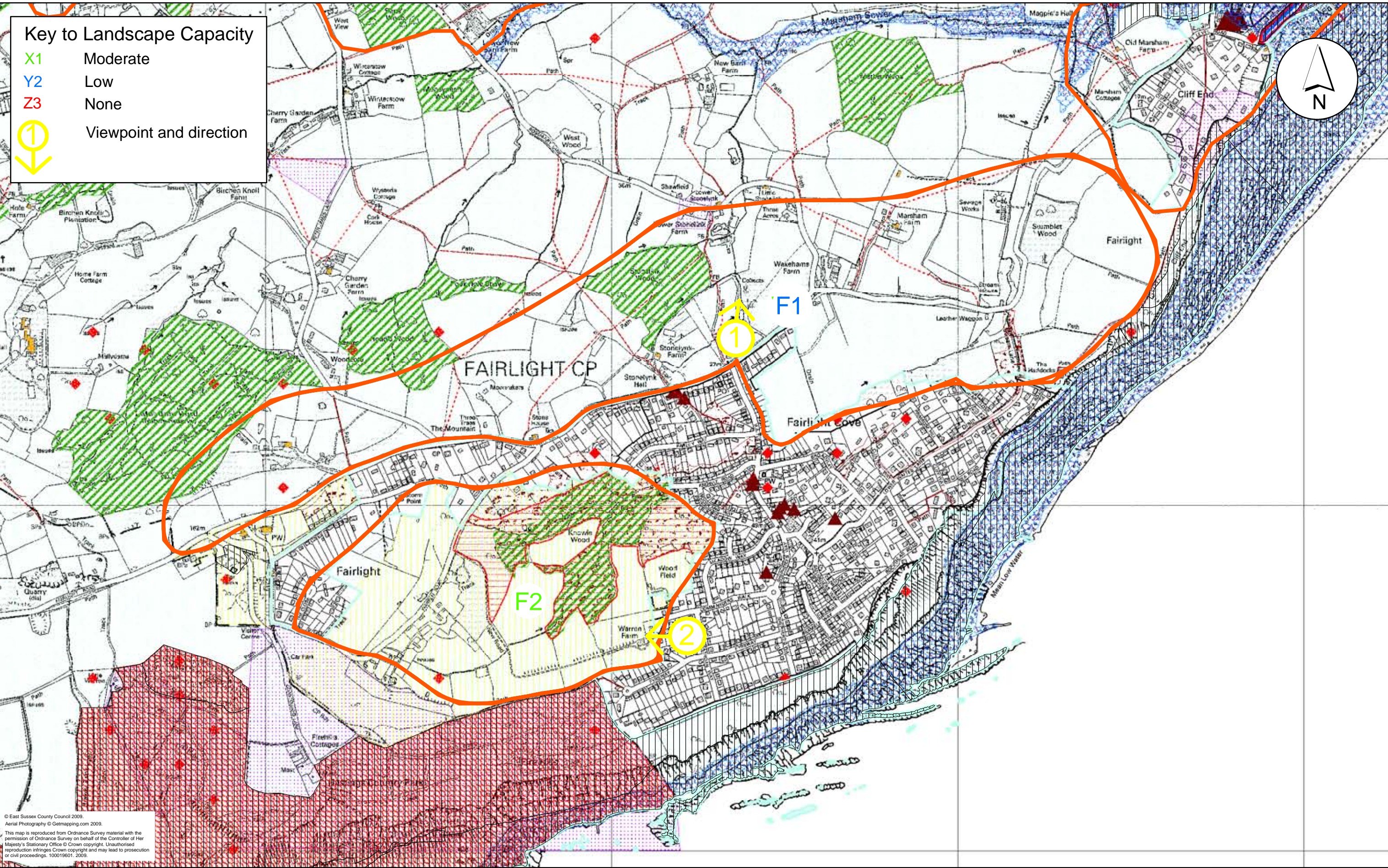
Drawing: Etchingham

Scale: 1:5,000

Figure 6



Key			
AONB (Area of Outstanding Natural Beauty)	RAMSAR (Wetland of International Importance)	Main Rivers	Archaeologically Sensitive Areas
Strategic Gap	SSSI (Site of Special Scientific Interest)	Flood Zone 2 (2008)	Listed Buildings
Development Boundary	SNCI (Sites of Nature Conservation Importance)	Flood Zone 3 (2008)	Ancient Monuments
SPA (Proposed Special Protection Area)	Ancient Woodland (English Nature)	Groundwater Source Protection Zones (Source)	Ancient Monuments (2006)
SAC (Special Areas of Conservation)	Protected Species (2005)	Groundwater Source Protection Zones (SPZ)	Registered Parks and Gardens (RO)
		Registered Battlefields (RO)	Conservation Areas
		Rights of Way, Road Used as a Public Path	Rights of Way, Footpath
		Rights of Way, Bridleway	Rights of Way, Byway
		TPO (Tree Preservation Orders - Individual Trees/Small Groups)	TPO (Tree Preservation Orders - Woodland)



Key

AONB (Area of Outstanding Natural Beauty)

Strategic Gap

Development Boundary

SPA (Proposed Special Protection Area)

SAC (Special Areas of Conservation)

RAMSAR (Wetland of International Importance)

SSSI (Site of Special Scientific Interest)

SNCI (Sites of Nature Conservation Importance)

Ancient Woodland (English Nature)

Protected Species (2005)

Main Rivers

Flood Zone 2 (2008)

Flood Zone 3 (2008)

Groundwater Source Protection Zones (Source)

Groundwater Source Protection Zones (SPZ)

Archaeologically Sensitive Areas

Listed Buildings

Ancient Monuments

Ancient Monuments (2006)

Registered Parks and Gardens (RO)

Registered Battlefields (RO)

Conservation Areas

Rights of Way. Footpath

Rights of Way. Bridleway

Rights of Way. Byway

Rights of Way. Road Used as a Public Path

TPO (Tree Preservation Orders - Individual Trees/Small Groups)

TPO (Tree Preservation Orders - Woodland)

Rother DC LDF Core Strategy
Market Towns and Villages
Landscape Assessment

Drawing: Fairlight Cove

Scale: 1:10,000 Figure 27

