

ACCOMMODATION SCHEDULE

Unit Reference	House Type or Flat	No. Beds	No. Persons	Area (N/A) sq. m	Parking Spaces	Parking Location	ESCC. Parking Requirement
1	A	3	4/5	105	2	d,d*	2.36
2	A	3	4/5	105	2	d,d	2.36
3	A	3	4/5	105	2	d,d	2.36
4	A	3	4/5	105	2	d,d	2.36
5	P	3	4/5	145	2	d,g*	2.36
6	P	3	4/5	145	2	d,g	2.36
7	B	4	5	160	2	d,g	2.37
8	B	4	5	160	2	d,g	2.37
9	B	4	5	160	2	d,g	2.37
10	B	4	5	160	2	d,g	2.37
11	B	4	5	160	2	d,g	2.37
12	B	4	5	160	2	d,g	2.37
13	B	4	5	160	2	d,g	2.37
14	C	3	4/5	125	2	d,d	2.36
15	C	3	4/5	125	2	d,d	2.36
16	C	3	4/5	125	2	d,d	2.36
17	P	3	4/5	145	2	d,g	2.36
18	P	3	4/5	145	2	d,g	2.36
19	P	3	4/5	145	2	d,g	2.36
Ockham Court	flat	2	4	70	1	g*	1.56
21	flat	2	4	70	1	g	1.56
22	flat	2	4	70	1	g	1.56
23	flat	2	4	70	1	g	1.56
24	D	2	4	85	1	g	1.91
25	D	2	4	85	1	g	1.91
26	D	2	4	85	1	g	1.91
27	D	2	4	85	1	g	1.91
28	G	4	5/6	160	2	d,g	2.37
29	G	4	5/6	160	2	d,g	2.37
30	G	4	5/6	160	2	d,g	2.37
31	G	4	5/6	160	2	d,g	2.37
32	G	4	5/6	160	2	d,g	2.37
33	G	4	5/6	160	2	d,g	2.37
34	G	4	5/6	160	2	d,g	2.37
35	G	4	5/6	160	2	d,g	2.37
Rother Court	flat	1	2	50	1	g	1.2
37	flat	1	2	50	1	g	1.2
38	flat	1	2	50	1	g	1.2
39	flat	1	2	50	1	g	1.2
40	N	1	2	70	1	d*	1.58
41	N	1	2	70	1	d	1.58
42	N	1	2	70	1	d	1.58
43	N	1	2	70	1	d	1.58
The Mill	flat	2	4	70	1	g	1
45	flat	1	2	52	1	g	1
46	flat	1	2	52	1	g	1
47	flat	2	4	70	1	g	1
48	flat	1	2	50	1	g	1
49	flat	1	2	50	1	g	1
50	flat	1	2	50	1	g	1
51	flat	1	2	54	1	g	1
52	flat	2	4	72	1	g	1
53	flat	2	4	70	1	b*	1
54	flat	1	2	52	1	b	1
55	flat	1	2	52	1	b	1
56	flat	2	4	70	1	b	1
57	flat	1	2	50	1	b	1
58	flat	1	2	50	1	b	1
59	flat	1	2	50	1	b	1
60	flat	1	2	54	1	b	1
61	flat	2	4	72	1	b	1
62	flat	2	4	70	1	b	1
63	flat	1	2	52	1	b	1
64	flat	1	2	52	1	b	1
65	flat	2	4	70	1	b	1
66	flat	2	4	80	1	b	1
67	flat	1	2	54	1	b	1
68	flat	2	4	72	1	b	1
69	flat	2	4	54	1	b	1
70	flat	1	2	72	1	b	1
71	flat	2	4	77	1	b	1
72	E	3	5	130	2	d,d	2.36
73	E	3	5	130	2	d,d	2.36
74	E	3	5	130	2	d,d	2.36
75	E	3	5	130	2	d,d	2.36
76	J	3	5	140	3	d,d,g	2.36
77	J	3	5	140	3	d,d,g	2.36
78	J	3	5	140	3	d,d,g	2.36
79	J	3	5	140	3	d,d,g	2.36
80	K	5	6	205	3	d,d,g	2.28
81	K	5	6	205	3	d,d,g	2.28
82	K	5	6	205	3	d,d,g	2.28
83	K	5	6	205	3	d,d,g	2.28
84	M	3	5	135	3	d,d,g	2.36
85	M	3	5	135	3	d,d,g	2.36
86	M	3	5	135	3	d,d,g	2.36
87	M	3	5	135	3	d,d,g	2.36
88	L	4	5/6	150	3	d,d,g	2.37
89	L	4	5/6	150	3	d,d,g	2.37
90	L	4	5/6	150	3	d,d,g	2.37
91	L	4	5/6	150	3	d,d,g	2.37
92	L	4	5/6	150	3	d,d,g	2.37
93	L	4	5/6	150	3	d,d,g	2.37
94	L	4	5/6	150	3	d,d,g	2.37
95	L	4	5/6	150	3	d,d,g	2.37
96	L	4	5/6	150	3	d,d,g	2.37
97	L	4	5/6	150	3	d,d,g	2.37
98	J	3	5	140	3	d,d,g	2.36

*Parking Location Key, b=(bay), d=(drive), g=(garage)

Total Residential Parking Spaces 175 180.4

Other Parking

Wealden Hall House Carpark	18
The Oast House Carpark	16
Visitor Parking Spaces across the whole site	53
Total Additional Parking Spaces	87

Non Residential Floor Areas

	Area (GIA) sq. m.
Unit 1, Wealden Hall House	520
Unit 2, The Mill	135
Unit 3, The Mill	145
Unit 4, The Oast House	400

ACCOMMODATION SUMMARY:

1 BED UNITS 24 no.
2 BED UNITS 20 no.
3 BED HOUSES 25 no.
4 BED HOUSES 25 no.
5 BED HOUSES 4 no.
TOTAL = 98 no.
RESIDENTIAL UNITS

COMMERCIAL
WEALDEN HALL HOUSE = 520m²
THE MILL = 280m²
THE OAST HOUSE = 400m²
TOTAL = 1200m²
COMMERCIAL SPACE

Note: See left for detailed schedule.

KEY

- Flood Zone 2
- Flood Zone 3

IMPORTANT

Do not work from reduced scale drawings. Please refer to scale and sheet size as indicated.
Dimensions are not to be scaled from this drawing. Use only written dimensions. Consultants and Contractors must verify all dimensions before starting work and any discrepancies are to be reported to Add Architects Ltd.

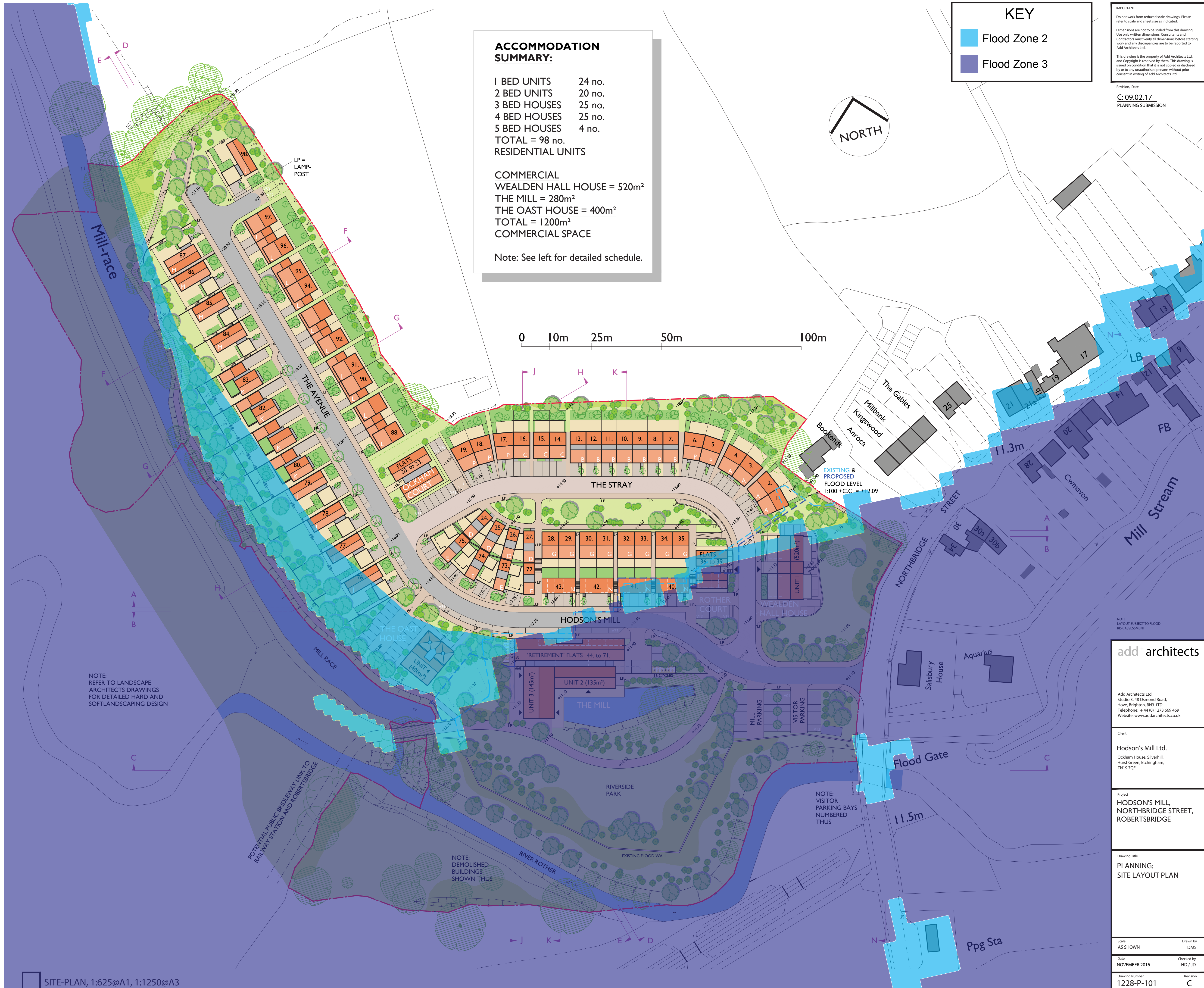
This drawing is the property of Add Architects Ltd. and Copyright is reserved by them. This drawing is issued on condition that it is not copied or disclosed by or to any unauthorised persons without prior consent in writing of Add Architects Ltd.

Revision, Date

C: 09.02.17
PLANNING SUBMISSION



0 10m 25m 50m 100m



NOTE:
REFER TO LANDSCAPE
ARCHITECTS DRAWINGS
FOR DETAILED HARD AND
SOFTLANDSCAPING DESIGN

NOTE:
DEMOLISHED
BUILDINGS
SHOWN THUS

NOTE:
VISITOR
PARKING BAYS
NUMBERED
THUS

NOTE:
LAYOUT SUBJECT TO FLOOD
RISK ASSESSMENT

add+ architects

Add Architects Ltd.
Studio 3, 48 Osmond Road,
Hove, Brighton, BN3 1TD,
Telephone: +44 (0) 1273 669 469
Website: www.addarchitects.co.uk

Client

Hodson's Mill Ltd.
Ockham House, Silverhill,
Hurst Green, Etchingham,
TN19 7QE

Project

HODSON'S MILL,
NORTHBRIDGE STREET,
ROBERTSBRIDGE

Drawing Title

PLANNING:
SITE LAYOUT PLAN

Scale

AS SHOWN

Drawn by

DMS

Date

NOVEMBER 2016

Checked by

HD / JD

Drawing Number

1228-P-101

Revision

C

SITE-PLAN, 1:625@A1, 1:1250@A3