

Burwash Neighbourhood Plan



Traffic and Transport Survey Report

February 2018

A very big thank you to the 244 households who completed this survey.

The replies provided a wealth of information on patterns of travel (car, public transport, cycling, walking), parking and road safety concerns from drivers, pedestrians, cyclists and riders. This feedback will all help in the preparation of the Burwash Neighbourhood Plan.

It seems clear from the responses that the parish contains a number of areas where pedestrians feel unsafe, even on pavements. Many villagers voiced concerns about walking along narrow pavements, along lanes without a walkway and crossing busy roads and junctions.

Cars parked on pavements were reported as a particular hazard because pedestrians have to walk out onto the road to pass them. Overgrown hedges and verges and the crash barriers at Crowhurst Bridge also make it hard for pedestrians to 'pull in' against passing vehicles. Examples were given of lorries, trucks, buses and cars mounting the pavement or travelling at inappropriate speeds, both in built up areas and along smaller lanes. People mentioned inconsiderate driving and even verbal abuse from drivers.

These comments come from a wide range of parishioners: older residents, parents and carers of babies and small children, walkers, dog-walkers, horse-riders and those with disabilities.

Particular areas highlighted were:

- Crossing the High St – especially by The Bear and the church.
- Narrow pavements at both ends of the High St.
- School Hill - especially with school traffic.
- Shrub Lane – the junctions at both the A265 and Strand Meadow (parked cars), the whole lane from Strand Meadow to Crowhurst Bridge (absence of walkway, blind bends, narrow bridge, speeding traffic).
- Heathfield Road – no safe walkway linking Burwash to Burwash Weald and Burwash Common and parked cars.

- Willingford Lane, Spring Lane, Stonegate Road, Perrymans Lane – all lanes and roads without walkways were mentioned as being dangerous due to the speed of traffic.

Vehicle Accidents: There were reports of traffic accidents and collisions.

More details can be seen on the map produced by the Sussex Safer Roads Partnership (SSRP) <http://dashboard.sussexsrp.org.uk/collisions/map/>.

An extract of this map below shows crash sites within Burwash parish (2014-2017) with a total of 19 personal injury crashes recorded by Sussex police.

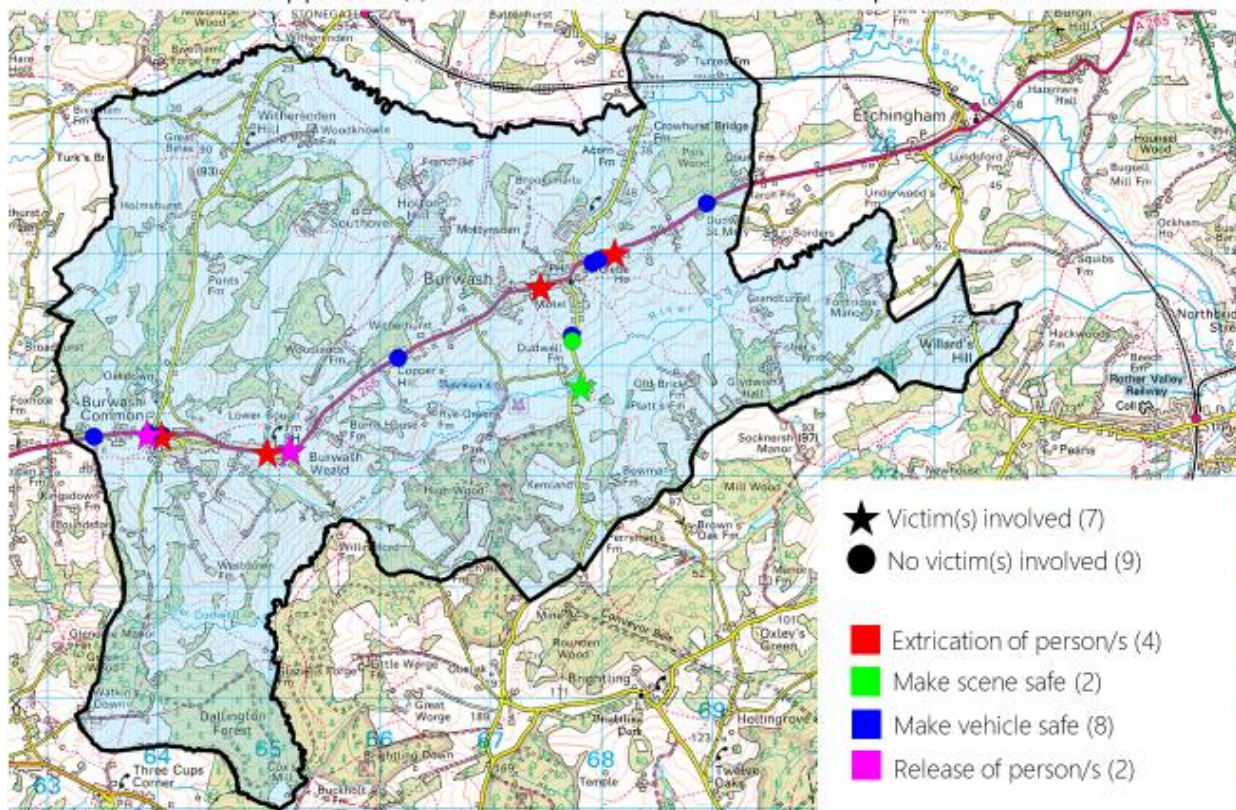
Green: classified as slight injuries = 13

Blue: classified as serious injuries = 6



East Sussex Fire & Rescue Service records for the parish:

RTCs where ESFRS appliance(s) was mobilised: Burwash Parish, Apr 2012 – Mar 2017



Areas repeatedly mentioned in the survey as being dangerous for motorists were the A265 bend combined with Shrub Lane junction, School Hill, Strand Meadow junction and all parish lanes emerging onto the A265.

Other incidents included numerous broken wing mirrors, cars damaged by herds of deer on Stonegate Road, lorry damage to a wall in the High St and parked cars written off in the High St by speeding drivers.

Requests were made for:

- a reduction in speed limits
- an introduction of speed cameras
- safe crossings
- cycle lanes
- more availability for parking / more considerate parking
- improved public transport (bus to co-ordinate with train times)

Patterns of transport: Cars, Cycles, Walking, Buses and Trains

The figures obtained from the survey are shown in a table at the end of this report.

These are some of the findings:

Cars per household: from this sample of 244 households the overall average is 1.7 cars per household.

- There are variations by area e.g. Burwash High St has 1.3 cars per household whereas further from the centre (e.g. Burwash Common, Fontridge Lane, Heathfield Rd, Willingford Lane) the ratio increases to 1.8 - 2.2.
- Difference between these levels for different geographic areas within the parish may reflect greater reliance on cars outside the 'heart' of village and also that there is more parking availability for houses located away from the 'ancient settlement'.

Use of bus:

- Around 10 % of individuals responding use the bus more than once a week, 24% occasionally and 66% never.

Use of trains: allowing for some overlap because there some people travel from both Etchingham and Stonegate

- 31 individuals use Etchingham station more than once a week, and 14 Stonegate.
- 217 individuals use Etchingham station occasionally and 95 Stonegate.

Walking:

Of 328 individuals within walking distance of the village

- 205 (63%) walk to the village more than once a week
- 88 (27%) occasionally
- 35 (10%) never walk to the village.

Of the individuals who responded about walking to school

- 22 walk more than once a week
- 11 occasionally.

Cycling:

- 80% never cycle
- 17% do so occasionally
- 3% more than once a week

Deliveries: (online shopping) from 243 forms it seems that 549 deliveries are being made to 130 households per month (average of 4.2) some have very large numbers individually. The remaining 113 households do not use online deliveries.

Conclusion:

The contents of this report and its detailed back up will be used by the Infrastructure Group to assess and prioritise the key issues raised as part of the Infrastructure Assessment for the Burwash Neighbourhood Plan.

Burwash Neighbourhood Plan	1		2			3									4			5				6			7				
Traffic and Transport Survey			Bus 231			>1x/week			Occ.			Never			Walk village			Walk school				Cycle			Deliveries				
Road	No. of forms	No. of cars	>1xweek	Occ.	Never	Etch.	Stone.	Other	Etch.	Stone.	Other	Etch.	Stone.	Other	>1x/wk	Occ.	Never	N/A	>1xweek	Occ.	Never	N/A	>1xweek	Occ.	Never	Num	No	Occ.	
Etchingham Rd.	2	4		2	2				4					2		3						2			2	3			
Burwash High St.	68	89	7	16	71	11	2		67	10		17	56		91	12	2		7	7	45	44	5	9	78	126	35		
Heathfield Rd. Burwash	17	33	6	3	15	3	1	1	13	6		5	5		7	21	9	2			8	12		4	17	68	12	2	
Shrub Lane	33	56	8	8	1	10			38	14		5	34		35	12	11		2	2	10	27	2	5	35	79	12	2	
Beechwood Close, Rosemary Gdns.	36	63	6	25	27	1			44	1	2	14	33		45	23	3		11	2	8	31	1	22	33	107	12		
School Hill	9	14			11				10	2		1	5		10	3	1				5	7	1	3	4	19	6		
Fontridge Lane	10	21			10	3			8			2	7			4	2	5			3	5		1	8	22	5		
Spring Lane	3	4		1	2					4		3				4						4			4	5	1		
Bateman's Lane	1	3			1				1				3				1					1			1	10			
Heathfield Rd., Burwash Weald/Common	11	29		2	17		4		5	14		3						11			11				16	46	4		
Willingford Lane	8	16	1	1	7		2		5	4		1	4					7			7		2	7	8	1			
Burwash Common	25	44		12	19		4		13	26		11	8			4	3	22			3	23	1	7	21	35	15	2	
Witherenden Hill	2	4			3					3		6						2			2	2				2		1	
No road given	19	30	3	3	19	3	1		9	11		10			17	2	3	3	2		8	9		2	24	22	10	1	
Totals	244	410	31	73	205	31	14	1	217	95	2	78	157	0	205	88	35	52	22	11	90	185	10	55	250	552	113	8	