

## Our priorities for 2021/22

The Council has set four priorities it wants to achieve for our residents and businesses. These are:

Priorities	What this means for residents and businesses	
Driving sustainable economic growth	<ul style="list-style-type: none"> <li>East Sussex businesses are supported to recover and grow through the delivery of the Economy Recovery Plan.</li> <li>The county's employment and productivity rates are maximised.</li> <li>Individuals, communities and business thrive in East Sussex with the environmental and social infrastructure to meet their needs.</li> </ul>	<ul style="list-style-type: none"> <li>The workforce has and maintains the skills needed for good quality employment to meet the needs of the future East Sussex economy.</li> <li>The value of our role as both a significant employer and a buyer of local goods and services is maximised.</li> <li>All children progress well from early years to school leaver and into education, training and employment.</li> </ul>
Keeping vulnerable people safe	<ul style="list-style-type: none"> <li>All vulnerable people in East Sussex are known to relevant local agencies and services are delivered together to meet their needs.</li> <li>People feel safe at home.</li> </ul>	<ul style="list-style-type: none"> <li>People feel safe with services.</li> <li>We work with the wider health and care system to support people affected by Covid-19 to achieve the best health outcomes possible.</li> </ul>
Helping people help themselves	<ul style="list-style-type: none"> <li>Commissioners and providers from all sectors put people first when providing services and information to help them meet their needs.</li> <li>The most vulnerable get the support they need to maintain their independence and this is provided at or as close to home as possible.</li> </ul>	<ul style="list-style-type: none"> <li>Through our work with others, individuals and communities are encouraged to maintain and develop local mutual support systems.</li> </ul>
Making best use of resources in the short and long term	<ul style="list-style-type: none"> <li>Working as One Council, both through the processes we use and how we work across services.</li> <li>Delivery through strong and sustained partnership working across the public, voluntary, community, and private sectors to ensure that all available resources are used to deliver maximum benefits to local people.</li> </ul>	<ul style="list-style-type: none"> <li>Ensuring we achieve value for money in the services we commission and provide.</li> <li>Maximising the funding available through bidding for funding and lobbying for the best deal for East Sussex.</li> <li>To help tackle Climate Change East Sussex County Council activities are carbon neutral as soon as possible and in any event by 2050.</li> </ul>

## Our approach for the year ahead

Gross spending in 2021/22 will be £868.4m, with over two-thirds of the total budget going towards Schools, Children's Services and Adult Social Care, supporting the county's most vulnerable residents who need particular care and support – including older people, people with mental health issues and learning disabilities and children and families.

The budget for 2021/22 includes **raising council tax by 3.49%** (1.99% Council Tax plus 1.5% Adult Social Care Precept), which is £1.00 a week for a Band D property. £0.57 of this goes towards maintaining all of our services, including Children's Services and Adult Social Care, along with services everyone may use, such as roads, libraries, community services and

environmental services. In addition there is a £0.43 increase as an Adult Social Care Precept to assist in meeting expenditure on Adult Social Care (see "What is the Adult Social Care Precept?" section below).

The services the Council provides are crucial to the residents of our county, particularly those who are most vulnerable. The importance of our services and support has been heightened further by the ongoing and far-reaching effects of COVID-19 across East Sussex. Although this year's budget includes delivering £0.9m of planned savings to add to the £138m of savings we have already made since 2010, prudent planning has put the Council in a position of not having to seek any further savings in 2021/22 beyond those already planned, providing much needed stability to local communities in uncertain times.

Continued overleaf →

Our plans for 2021/22 include:

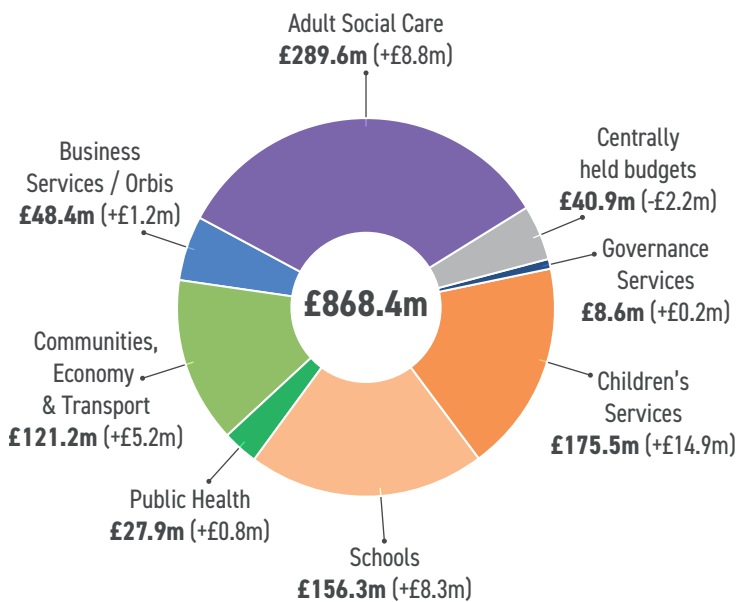
- Working with partners to deliver an Economy Recovery Plan for East Sussex to help business and communities recover from the impact of COVID-19.
- Continuing our work with the local NHS to develop integrated health and social care services, to better meet people's needs.
- Supporting the most vulnerable families, helping them to find ways to manage independently and cope with problems so that they can stay together where possible and achieve better outcomes for children and parents.

- Ongoing support to schools, including rolling out three Mental Health Support Teams working with children in school and developing whole school approaches.
- Progressing infrastructure projects, including the Queensway Gateway Road and new improvements to Terminus Road in Eastbourne, as well as walking and cycling improvements in Eastbourne, Bexhill and Hastings.
- Beginning to deliver, alongside partners, the Climate Change Action Plan that will help facilitate the take-up of electric vehicles, improve the energy efficiency of street lighting, and implement further energy efficiency measures for the Council's buildings.

## Services provided

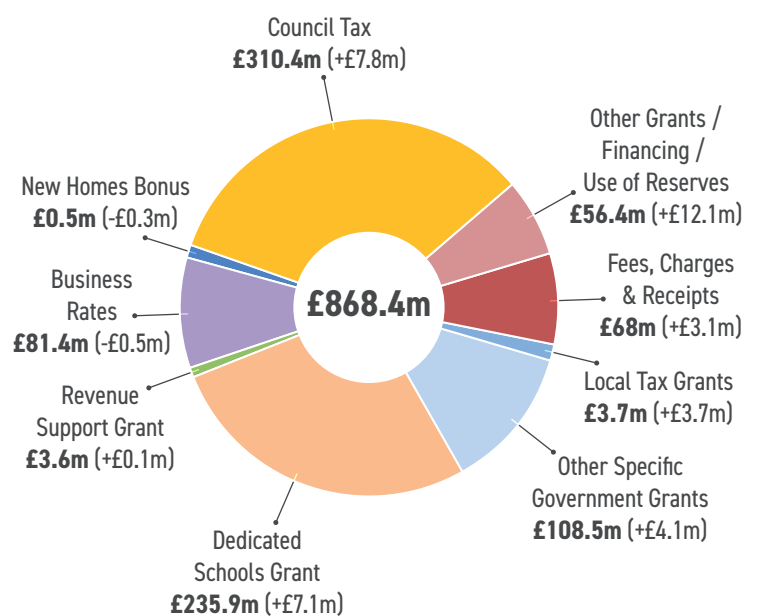
### How we will spend your money in 2021/22

(Difference from 2020/21 shown in brackets)



### Where the money comes from in 2021/22

(Difference from 2020/21 shown in brackets)



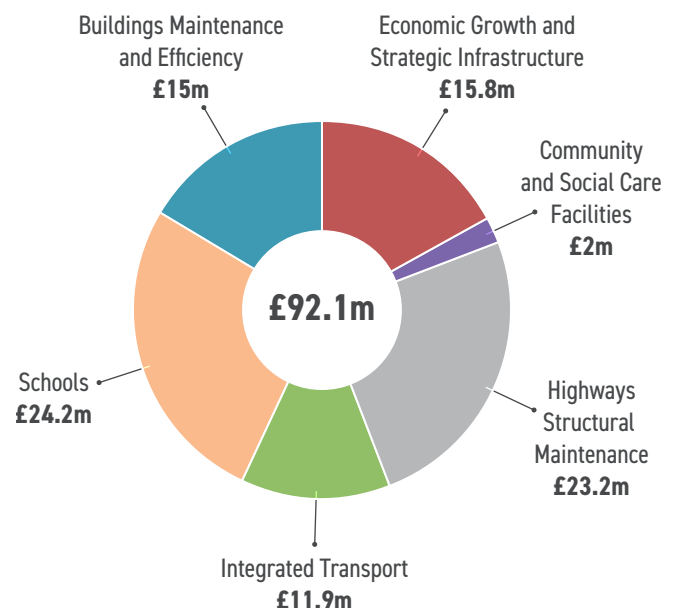
## Capital Programme 2021/22

As well as providing services, the Council also uses our capital programme of £289.2m over the period 2020/21 to 2023/24 to provide long-term improvements, including investing in assets such as roads and buildings and schools, that will deliver our priorities to support the needs of residents.

Of the total capital programme, £92.1m gross is expected to be spent in 2021/22, which includes:

- schemes to support economic growth,
- provide enough school places,
- improve roads,
- social care facilities and libraries, and
- investments to make our buildings more efficient and cheaper to run in the long-term.

### Capital expenditure in 2021/22



## What is the Adult Social Care Precept?

By statute\* the Council is required to supply separate information on the Adult Social Care Precept.

The Secretary of State made an offer to adult social care authorities. (“Adult social care authorities” are local authorities which have functions under Part 1 of the Care Act 2014, namely county councils in England, district councils for an area in England for which there is no county council, London borough councils, the Common Council of the City of London and the Council of the Isles of Scilly.)

The offer was the option of an adult social care authority being able to charge an additional “precept” on its council tax without holding a

referendum, to assist the authority in meeting its expenditure on adult social care from the financial year 2016/17. It was originally made in respect of the financial years up to and including 2019/20. If the Secretary of State chooses to renew this offer in respect of a particular financial year, this is subject to the approval of the House of Commons. On the 4th February 2021, the Secretary of State for the Ministry of Housing, Communities and Local Government announced, as part of the final local government settlement 2021 to 2022, and subject to the approval of the House of Commons, that Councils would be able to charge a further 3% in 2021/22 with the potential to spread it across two years.

\* The Council Tax (Demand Notices) (England) (Amendment) Regulations 2020.

### Charges per Council Tax Band

Band	Property value (April 1991)	General Expenditure	ASC Precept	Total
A	Up to £40,000	£928.08	£101.28	<b>£1,029.36</b>
B	£40,001 to £52,000	£1,082.76	£118.16	<b>£1,200.92</b>
C	£52,001 to £68,000	£1,237.44	£135.04	<b>£1,372.48</b>
D	£68,001 to £88,000	£1,392.12	£151.92	<b>£1,544.04</b>
E	£88,001 to £120,000	£1,701.48	£185.68	<b>£1,887.16</b>
F	£120,001 to £160,000	£2,010.84	£219.44	<b>£2,230.28</b>
G	£160,001 to £320,000	£2,320.20	£253.20	<b>£2,573.40</b>
H	Over £320,000	£2,784.24	£303.84	<b>£3,088.08</b>

The council tax you pay is based on the value of your house in 1991. If you have any questions about your banding please contact the Valuation Office Agency at Westmoreland House, Strand Parade, Goring by Sea, BN12 6EA or phone 03000 501501.

### Finding out more

Should you have any questions about the budget and our council tax please email [finance@eastsussex.gov.uk](mailto:finance@eastsussex.gov.uk) or phone **0345 60 80 190**.

You can find out more about the work we will be doing over the next three years in our Council Plan, which will be published on our website by 1 April, along with full

details of our budget for the year ahead.

Go to [eastsussex.gov.uk/councilplan](http://eastsussex.gov.uk/councilplan) and [eastsussex.gov.uk/finance](http://eastsussex.gov.uk/finance).