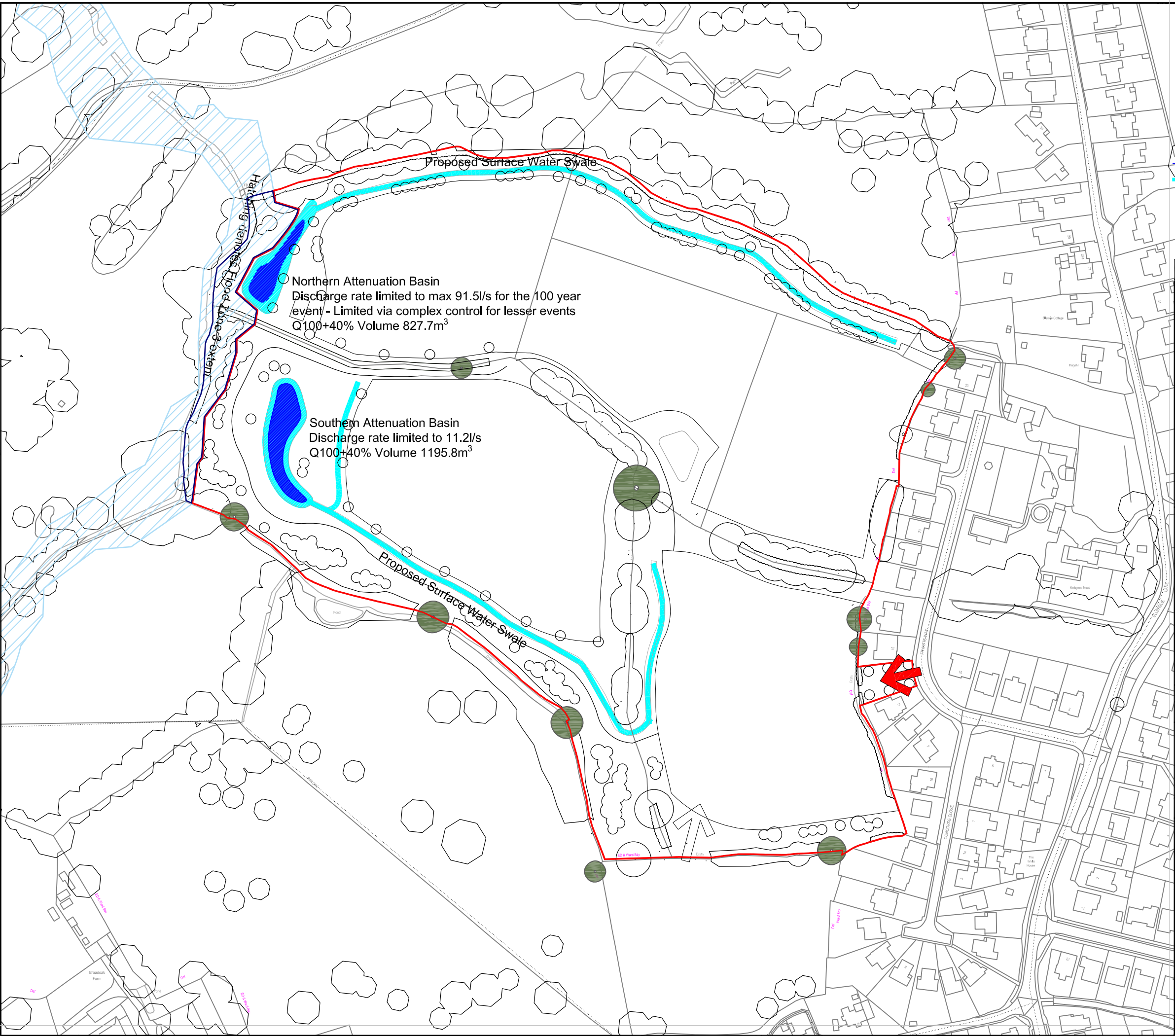





File Location: L:\004\_JOBS\_COMPLETED\881964 - FRYATTS WAY, BEXHILL GLADMAN\GRAPH\FLOOD\_RISK\881964 - (P4) INDICATIVE DRAINAGE STRATEGY.DWG



**Notes**  
 Do not scale from this drawing  
 Layout provided by FPCR  
 Drawing is indicative and subject to change following layout revisions  
 Cover levels and invert levels are indicative and based on assumptions. these are subject to change at detailed design

**Key**  
 Proposed Surface Water Pipes  
 Proposed Surface Water Swale  
 Attenuation Basin

P4	Jun 21	Revised DFP	CW	RW	IC
P3	Feb 20	Revised DFP	CW	RW	IC
P2	Jan 20	Revised DFP	CW	RW	IC
P1	Jan 20	Draft for comment	CW	RW	IC

Rev.	Date	Amendment	Drawn	Chkd.	Appd.
------	------	-----------	-------	-------	-------



**RSK**  
 LAND & DEVELOPMENT ENGINEERING LTD

Spring Lodge  
 172 Chester Road  
 Helsby  
 Cheshire, WA6 0AR  
 United Kingdom

Tel: +44 (0) 1928 726006  
 Fax: +44 (0) 1928 725633  
 Email: [ite@rsk.co.uk](mailto:ite@rsk.co.uk)  
 Web: [www.rsk.co.uk](http://www.rsk.co.uk)

Client  
**Gladman Developments Ltd**

Project Title  
**Land off Fryatt's Way  
 Bexhill**

Status  
**For Issue**

Drawing Title  
**Indicative Surface Water  
 Drainage Strategy**

Drawn	Date	Checked	Date	Approved	Date
CW	Dec 19	RW	Jan 20	IC	Jan 20

Scale	Orig Size	Dimensions
Not to Scale	A3	m

Project No.	Drawing File
881964	

Drawing No.	Rev.
10-01	P3