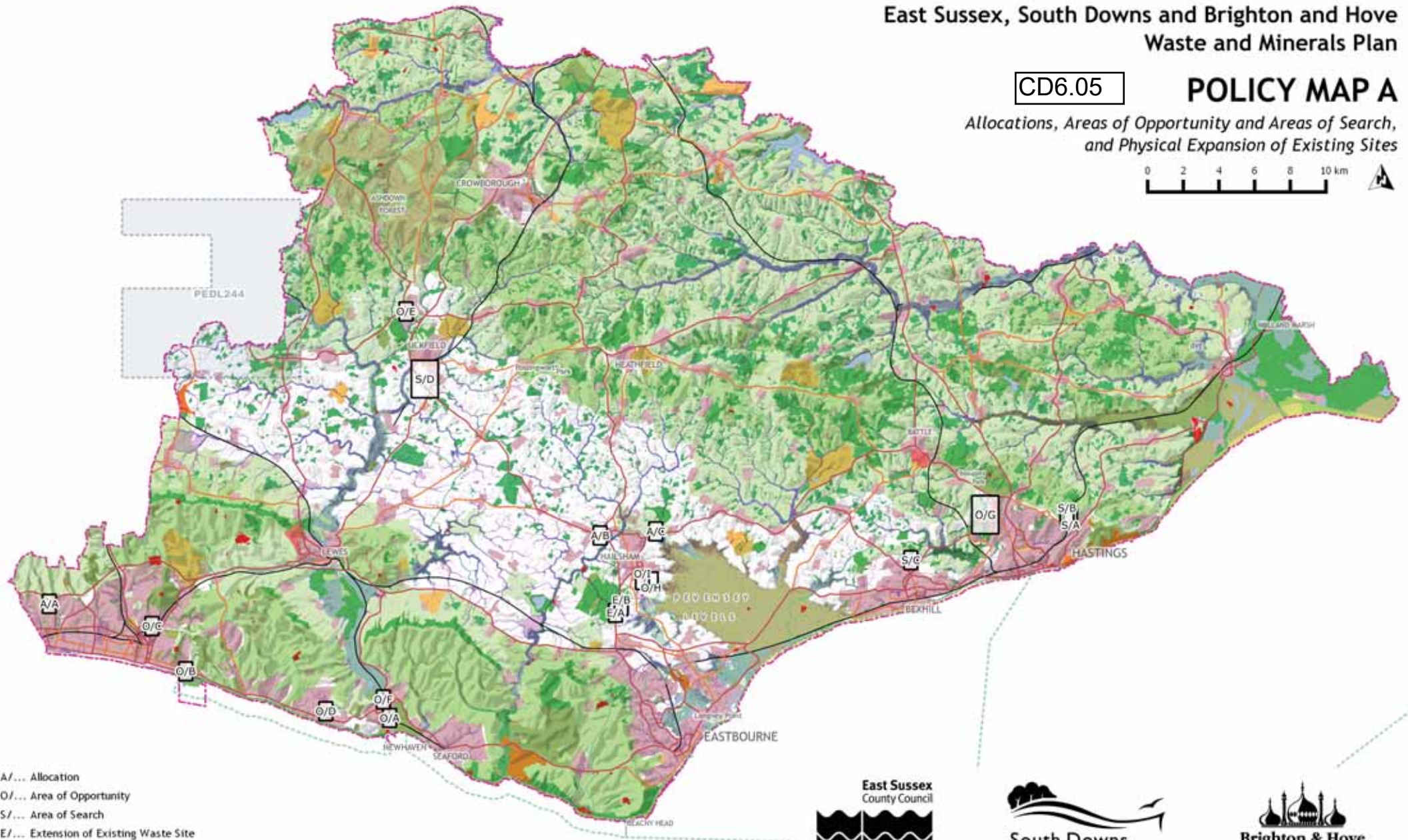
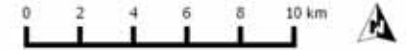


# East Sussex, South Downs and Brighton and Hove Waste and Minerals Plan

CD6.05

## POLICY MAP A

Allocations, Areas of Opportunity and Areas of Search, and Physical Expansion of Existing Sites



- A/... Allocation
- O/... Area of Opportunity
- S/... Area of Search
- E/... Extension of Existing Waste Site

- |  |                            |   |
|--|----------------------------|---|
| WMSP Inset Map Boxes                           | Historic Parks and Gardens | Environmental Designation - Local         |
| Plan Area                                      | Country Parks              | Environmental Designation - National      |
| Petroleum Exploration Development Licence Area | Scheduled Monument         | Environmental Designation - International |
| Marine Conservation Zone                       | EA Floodzone 2             | National Park and AONB                    |
| Historic Battlefield                           | EA Floodzone 3             |   |

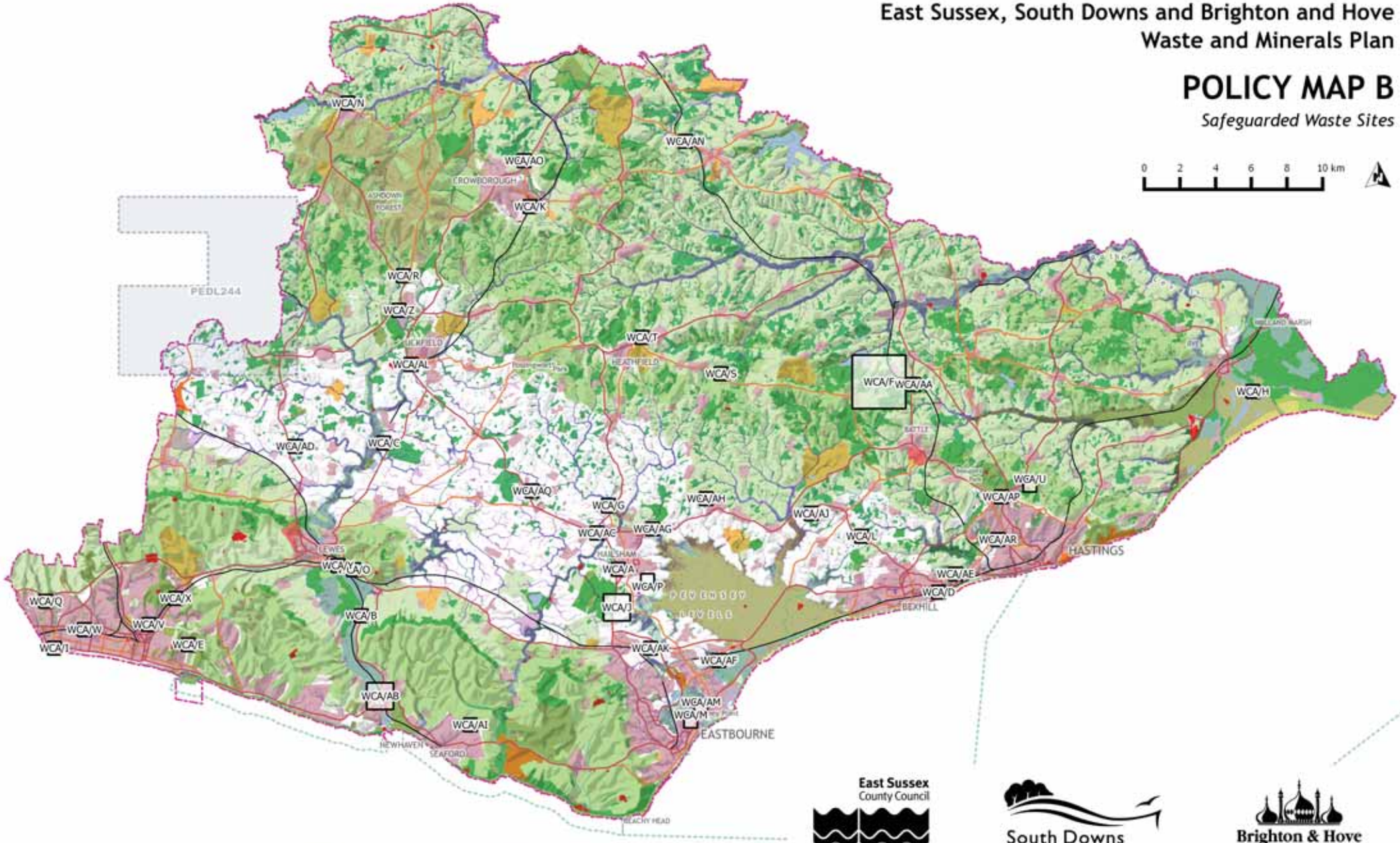
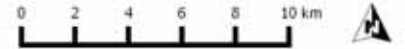


This map is reproduced from Ordnance Survey material with the permission of Ordnance Survey on behalf of the Controller of Her Majesty's Stationary Office © Crown copyright. Unauthorised reproduction infringes Crown copyright and may lead to prosecution or civil proceedings. 100019601. 2016. Environmental Designations © Brighton & Hove City Council / © East Sussex County Council / © Natural England 2016. Local consists of SNCI, Local Nature Reserves; National consists of SSSI and Ancient Woodland; International consists of RAMSAR; Special Protection Areas (SPA); and Special Areas of Conservation (SAC). Flood zones and Surface Water Extents © Environment Agency 2016. Historic Battlefields, Historic Parks and Gardens; County Parks and Scheduled Monuments © English Heritage 2016. Petroleum Exploration Development Licence Areas © Department for Energy and Climate Change 2016.

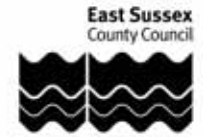
East Sussex, South Downs and Brighton and Hove  
Waste and Minerals Plan

**POLICY MAP B**

Safeguarded Waste Sites



- WMSP Inset Map Boxes
- Plan Area
- Petroleum Exploration Development Licence Area
- Marine Conservation Zone
- Historic Battlefield
- Historic Parks and Gardens
- Country Parks
- Scheduled Monument
- EA Floodzone 2
- EA Floodzone 3
- Environmental Designation - Local
- Environmental Designation - National
- Environmental Designation - International
- National Park and AONB

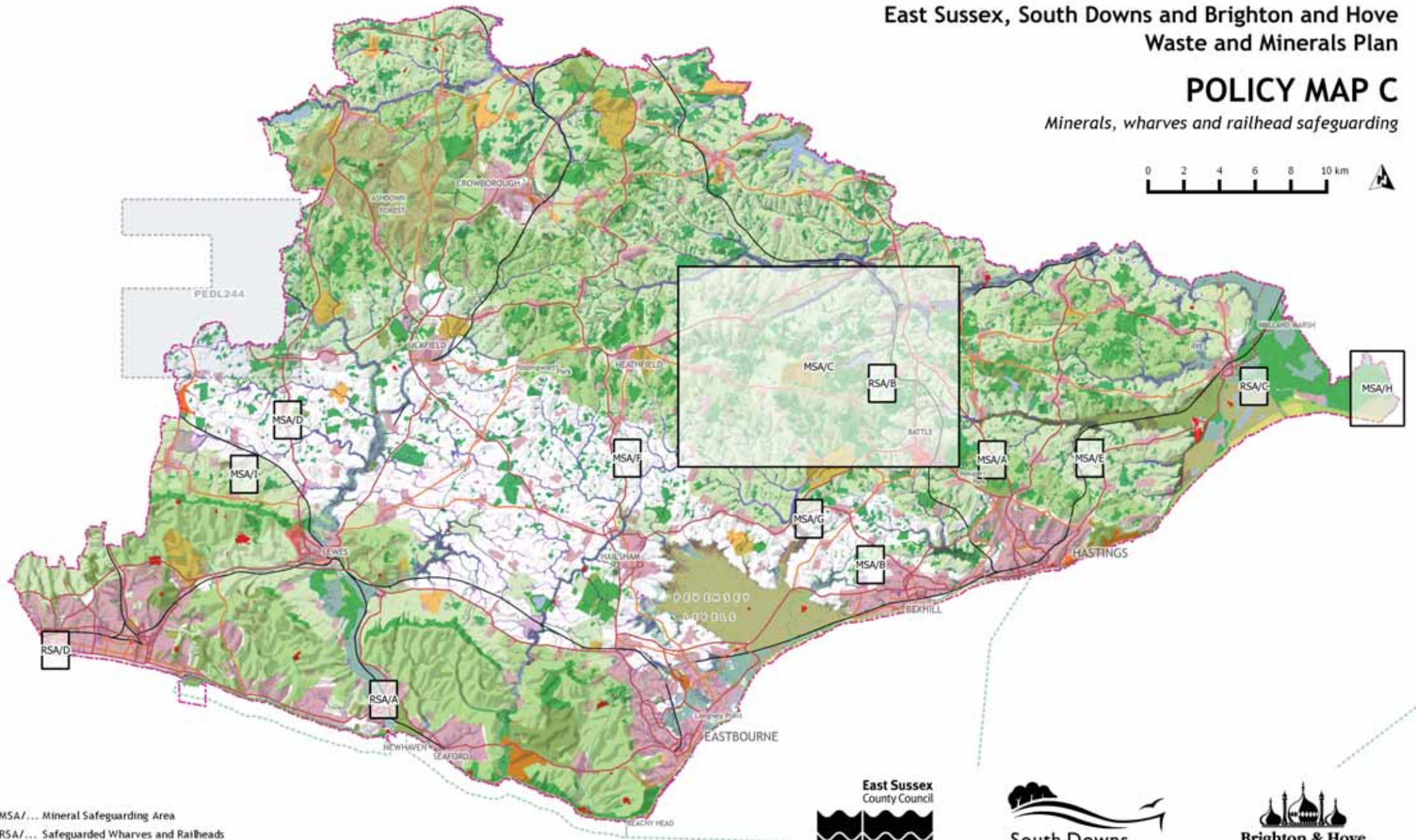


This map is reproduced from Ordnance Survey material with the permission of Ordnance Survey on behalf of the Controller of Her Majesty's Stationary Office © Crown copyright. Unauthorised reproduction infringes Crown copyright and may lead to prosecution or civil proceedings. 100019601. 2016. Environmental Designations © Brighton & Hove City Council / © East Sussex County Council / © Natural England 2016. Local consists of SNCI, Local Nature Reserves; National consists of SSSI and Ancient Woodland; International consists of RAMSAR; Special Protection Areas (SPA); and Special Areas of Conservation (SAC). Flood zones and Surface Water Extents © Environment Agency 2016. Historic Battlefields, Historic Parks and Gardens; County Parks and Scheduled Monuments © English Heritage 2016. Petroleum Exploration Development Licence Areas © Department for Energy and Climate Change 2016.

# East Sussex, South Downs and Brighton and Hove Waste and Minerals Plan

## POLICY MAP C

Minerals, wharves and railhead safeguarding



MSA/... Mineral Safeguarding Area  
RSA/... Safeguarded Wharves and Railheads

- |  |                            |   |
|--|----------------------------|---|
| WMSP Inset Map Boxes                           | Historic Parks and Gardens | Environmental Designation - Local         |
| Plan Area                                      | Country Parks              | Environmental Designation - National      |
| Petroleum Exploration Development Licence Area | Scheduled Monument         | Environmental Designation - International |
| Marine Conservation Zone                       | EA Floodzone 2             | National Park and AONB                    |
| Historic Battlefield                           | EA Floodzone 3             |   |



This map is reproduced from Ordnance Survey material with the permission of Ordnance Survey on behalf of the Controller of Her Majesty's Stationary Office © Crown copyright. Unauthorised reproduction infringes Crown copyright and may lead to prosecution or civil proceedings. 100019601. 2016. Environmental Designations © Brighton & Hove City Council / © East Sussex County Council / © Natural England 2016. Local consists of SNCI, Local Nature Reserves; National consists of SSSI and Ancient Woodland; International consists of RAMSAR; Special Protection Areas (SPA); and Special Areas of Conservation (SAC). Flood zones and Surface Water Extents © Environment Agency 2016. Historic Battlefields, Historic Parks and Gardens; County Parks and Scheduled Monuments © English Heritage 2016. Petroleum Exploration Development Licence Areas © Department for Energy and Climate Change 2016.