

CAMBER SANDS WELCOME CENTRE

1

Rother District Council have successfully secured just over £1million of funding through the Community Infrastructure Levy and DLUHC Grant to improve and expand the toilet facilities at Camber Central. The proposed Camber Central Welcome Centre, will provide **more toilets**, a **kiosk**, and a **new space** for use as a **coastal office** during summer and as a **bookable space** for the public and community groups during the winter.



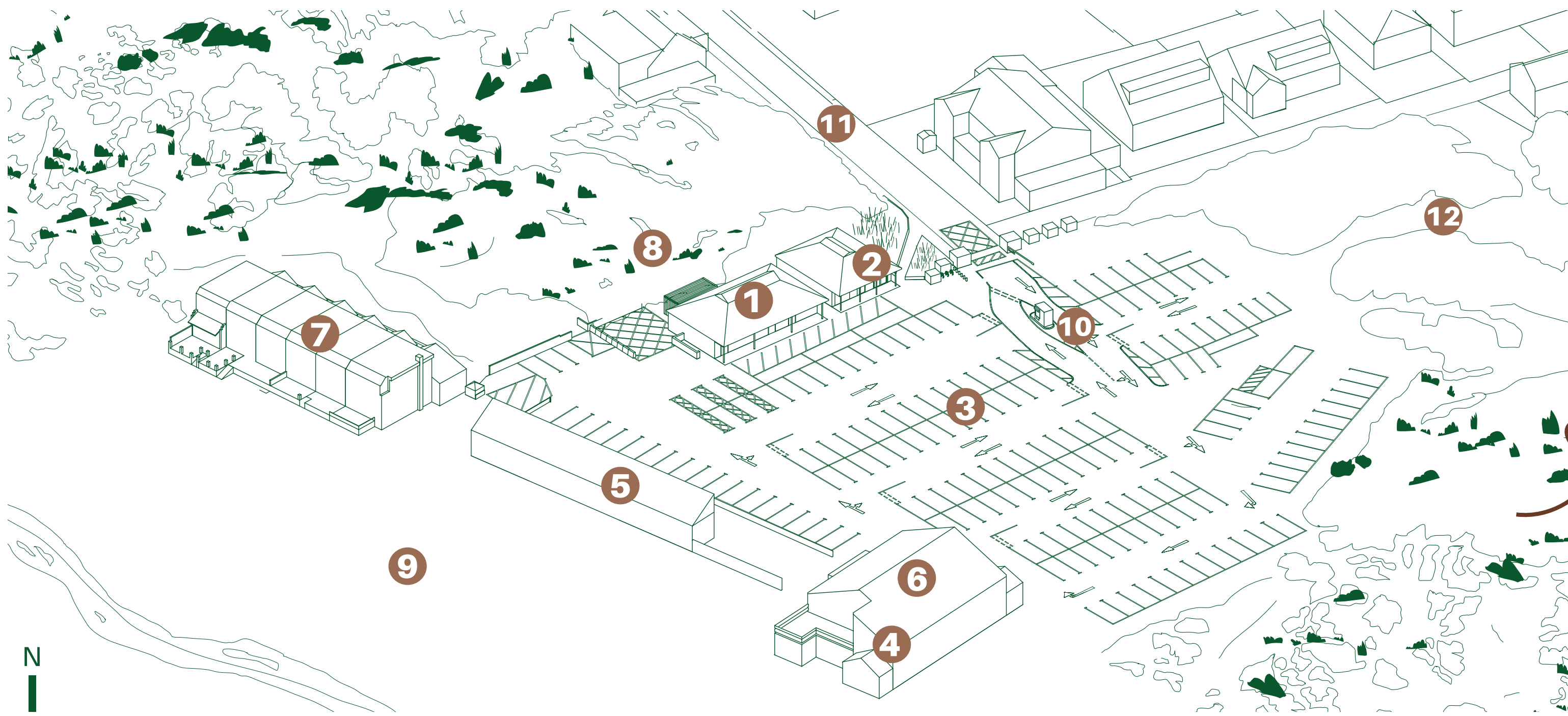
DK-CM

find out more details and comment here...



CAMBER SANDS WELCOME CENTRE

2



what's there now

- | | | |
|----------------------------------|----------------------------|--|
| 1. Camber Central WCs | 5. Beach Kiosks and Rental | 9. Beach |
| 2. Coastal Office | 6. Beach Cafe | 10. Car Park Kiosk |
| 3. Camber Central Car Park | 7. Holiday Cottages | 11. Old Lydd Road |
| 4. The Lookout Coastal Classroom | 8. Sand Dunes | 12. Access to Johnson's Field Overflow |

The **existing buildings** provide **toilet and first aid facilities** which are **very busy during the summer season**. The existing buildings will be **renovated** to provide **more efficient and expanded facilities** for **visitors, locals and staff**.

WELCOMING

Creating an attractive place which eases pressures in high season and is also useful in off-season for the local community.

SAFE

Facilities that support staff and public safety whilst educating people about the coastal environment.

The new facilities will be...

FUNCTIONAL

Robust facilities which are easy to maintain and sustainable to run.

More toilets and expanded coastal offices which are financially sustainable for the long-term.



find out more details and comment here...



CAMBER SANDS WELCOME CENTRE

3

This project is an opportunity to **improve and expand visitor facilities**, and make the buildings **more efficient and welcoming** including new **community facilities** within.



Three key design principles have been identified for the project:

Current layouts and high demand during busy times cause long queues, water shortages and negatively impacts on visitor experience.

Create space for new uses including bookable space for the local community and 'grab and go' refreshments.

New coastal offices for support staff and the RNLI.

MAXIMISE CAPACITY

Improvements to layouts that increase the number and efficiency of all toilets.

Provide a 'Changing Places' toilet to improve access to Camber for all.

ENHANCE THE EXISTING

Reuse and extend the existing building to provide space for enhanced activities including commercial space.

Sand and water have caused a lot of damage to the building and its drainage systems.

The buildings are currently in poor condition and maintenance can be difficult.

Provide educational spaces and information which focus on sea safety, wildlife information and dune management.

SUSTAINABILITY

Invest in a sustainable design which improves the performance of the building for the long-term.

Deliver a sustainable building which reduces energy and water usage, including solar panels, improved drainage systems, more natural light and a green roof.

Working with local makers and manufacturers to transform site waste into usable materials.

Wherever possible work with local makers, fabricators and craftspeople.

Designs have taken inspiration from the old and new buildings of Camber



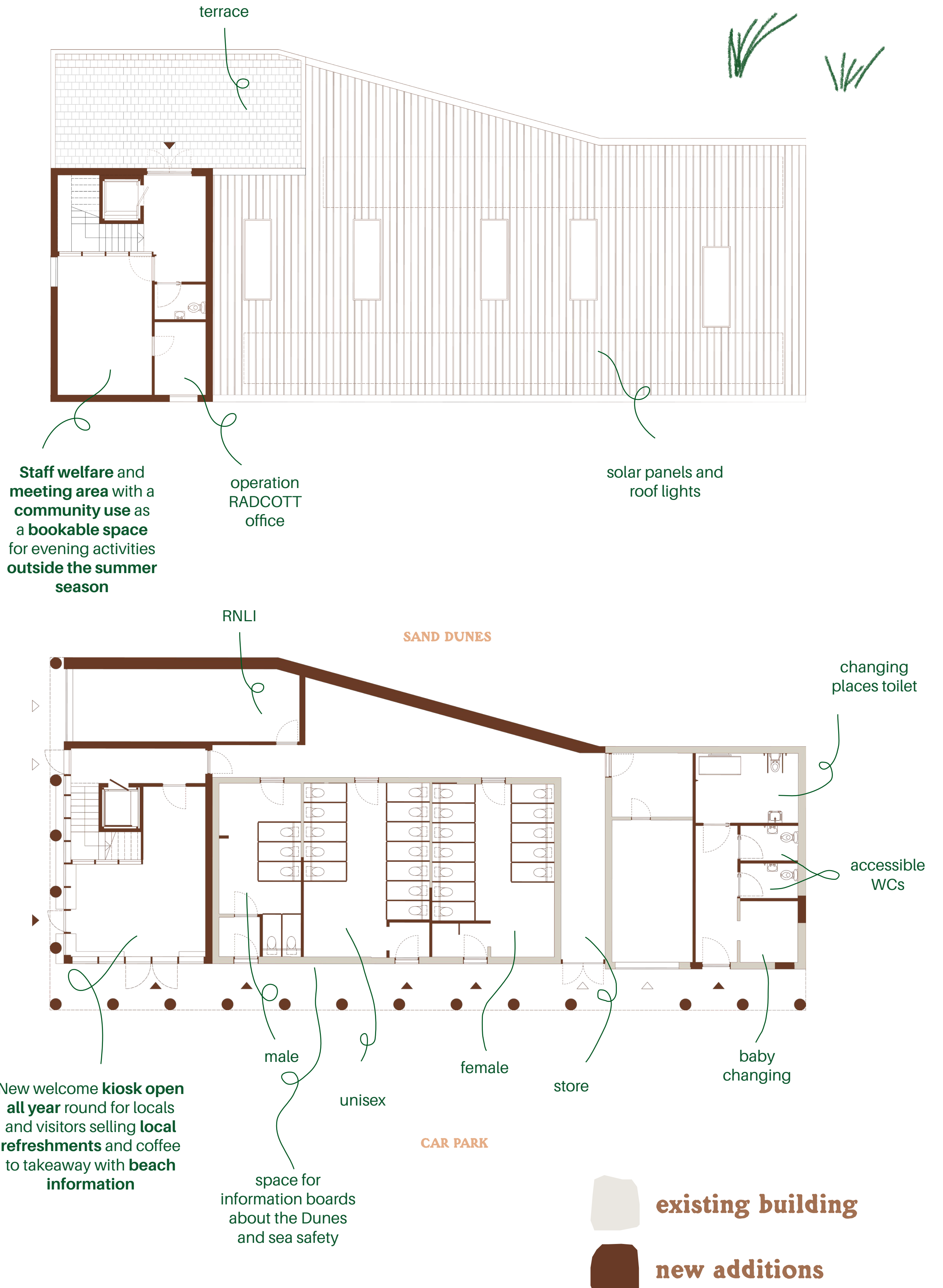
find out more details and comment here...



CAMBER SANDS WELCOME CENTRE

4

The project will **retain** and **expand** the **existing buildings** creating a more **accessible** and **welcoming** space that represents Camber's history as a place of **seaside pleasure** through the building materials and its form.



	SPACE	PROVISION	
		Existing	Proposed
PUBLIC	Disabled	1 accessible WC	2 accessible WCs, 1 'changing places' toilet
	Female	12 cubicles	12 cubicles
	Male	5 cubicles and 5 urinals	5 cubicles and 7 urinals
	Unisex	0	12 cubicles
	Baby change	0 sqm	7 sqm
	Kiosk	0 sqm	33 sqm
STAFF	RNLI	5 sqm	31 sqm
	Operations & welfare	74 sqm	124 sqm
	First Aid	4 sqm	10 sqm

The proposals will nearly double floor space and increase toilet provisions by 170%.



find out more details and comment here...

